



**Custom Truck One Source**

Waterloo, Iowa

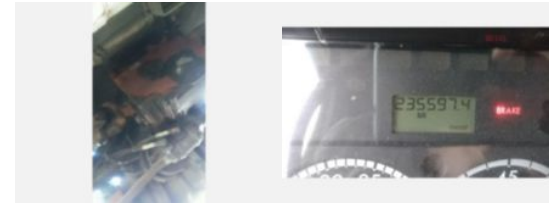
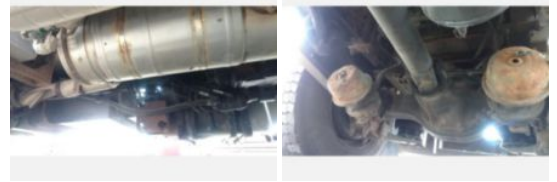
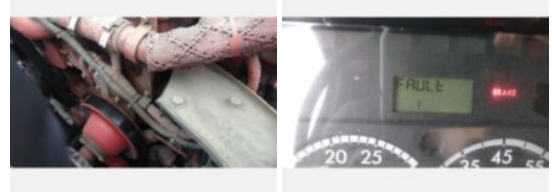
Phone:

<https://www.customtruck.com/locations>

**2015 Freightliner M2 4x2 Wilkie 60 Aerial Sign Truck**

**Call for price**

Stock FDGK0922 VIN 3ALACWDT7FDGK0922



Truck Specifications		Unit Specifications	
<b>Year</b>	2015	<b>Attachment Make</b>	Wilkie
<b>Make</b>	FREIGHTLINER	<b>Attachment Model</b>	60ft
<b>Model</b>	M2 4x2		
<b>Chassis Class</b>	Truck		
<b>Engine Make</b>	Cummins		
<b>Engine Model</b>	ISB 6.7L		
<b>Engine HP</b>	300		
<b>Transmission</b>	Manual		
<b>Transmission Speed</b>	6		
<b>FA Capacity</b>	10,000		
<b>RA Capacity</b>	17,500		
<b>Rear Axle Ratio</b>	5.13		
<b>Wheelbase</b>	180		
<b>Current Meter Reading (mi)</b>	235,597		
<b>Rear Suspension</b>	Air Ride		
<b>Engine Fuel Type</b>	Diesel		
<b>GVWR (lb)</b>	26,000		
<b>Frame</b>	Steel		
<b>Transmission Make</b>	Eaton		
<b>Running Condition</b>	Running		

DISCLAIMER: Price quoted includes any applicable FET. Quoted price is Ex Works and does not include any freight / delivery charges, sales tax, titling fees, or registration fees. Specifications are believed to be correct but may contain errors and/or omissions. Pictures are representative and may not be identical. Description and Images Custom Truck One Source