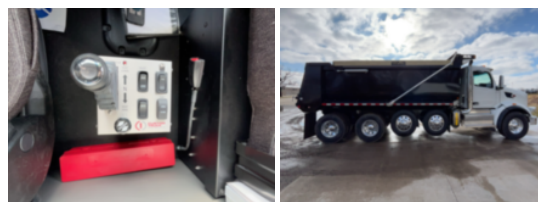


2026 Peterbilt 567 10x4 19' Load King Dump Truck
\$ 266,411

Stock TD809828 VIN 1NPCX4EX5TD809828



| Truck Specifications | | Unit Specifications | |
|---------------------------|-----------------|------------------------------|-----------------|
| Year | 2026 | Attachment Year | 2025 |
| Make | Peterbilt | Bed/Body Make | Load King |
| Model | 567 | Bed/Body Model | LKXD19X603/16DB |
| Cab Type | REGULAR CAB | Dump Body Length (ft) | 19 |
| CA or CT | 171 | Dump Body Type | Elliptical |
| Chassis Class | CLASS 8 CHASSIS | Dump Load (cu yd) | 24 |
| Engine Make | CUMMINS | | |
| Engine Model | X15 D | | |
| Engine HP | 525 | | |
| Transmission | Automatic | | |
| Transmission Speed | 6 | | |
| FA Capacity | 20,000 | | |
| RA Capacity | 46,000 | | |
| Wheelbase | 245 | | |
| Brakes | AIR DISC | | |
| Pusher Axle(s) | (2) 13.5K S | | |
| Rear Suspension | AIR | | |
| Engine Size | 14.9 | | |
| Engine Fuel Type | Diesel | | |
| Axle Config | 10x4 | | |
| GVWR (lb) | 93,000 | | |
| Frame | SINGLE | | |
| PTO Options | YES | | |