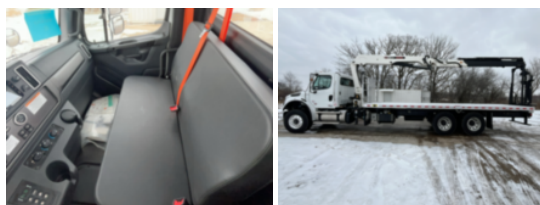


2026 Freightliner M2106 6x4 IMT 2530L L4 Drywall Crane
\$ 334,910

Stock TDWH1697 VIN 3ALHCYFEXTDWH1697



Truck Specifications		Unit Specifications	
CARB Registered	No	Attachment Year	2024
Year	2026	Attachment Make	IMT
Make	Freightliner	Attachment Model	2530L L4
Model	M2106	Bed/Body Make	Load King
Cab Type	REGULAR CAB	Bed/Body Model	LKWB24_6X102FB
CA or CT	213		
Chassis Class	CLASS 8 CHASSIS		
Engine Make	CUMMINS		
Engine Model	L9 D		
Engine HP	350		
Transmission	Automatic		
Transmission Speed	6		
FA Capacity	20,000		
RA Capacity	46,000		
Wheelbase	279		
Brakes	AIR		
Rear Suspension	AIR		
Engine Size	L9 D		
Engine Fuel Type	Diesel		
Axle Config	6x4		
GVWR (lb)	66,000		
Frame	DOUBLE		
PTO Options	YES		