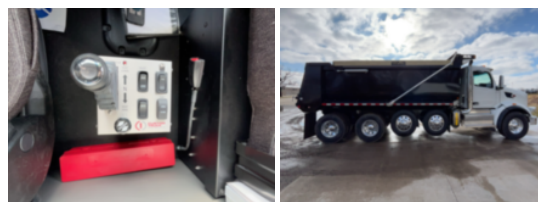


2026 Peterbilt 567 10x4 19' Load King Dump Truck
\$ 266,411

Stock TD809827 VIN 1NPCX4EX3TD809827



Truck Specifications		Unit Specifications	
Year	2026	Attachment Year	2025
Make	Peterbilt	Bed/Body Make	Load King
Model	567	Bed/Body Model	LKXD19X603/16DB
Cab Type	REGULAR CAB	Dump Body Length (ft)	19
CA or CT	171	Dump Body Type	Elliptical
Chassis Class	CLASS 8 CHASSIS	Dump Load (cu yd)	24
Engine Make	CUMMINS		
Engine Model	X15 D		
Engine HP	525		
Transmission	Automatic		
Transmission Speed	6		
FA Capacity	20,000		
RA Capacity	46,000		
Wheelbase	245		
Brakes	AIR DISC		
Pusher Axle(s)	(2) 13.5K S		
Rear Suspension	AIR		
Engine Size	14.9		
Engine Fuel Type	Diesel		
Axle Config	10x4		
GVWR (lb)	93,000		
Frame	SINGLE		
PTO Options	YES		