



Custom Truck One Source

Kansas City, MO

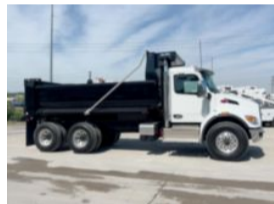
Phone: (816) 256-3200

<https://www.customtruck.com/locations>

2025 Peterbilt 548 6x4 16' Load King Dump Truck

\$ 186,960

Stock SM713719 VIN 2NP8LJ0X2SM713719



Truck Specifications		Unit Specifications	
Year	2025	Bed/Body Make	Load King
Make	Peterbilt	Bed/Body Model	LKEXD16-0423/16
Model	548		
Cab Type	REGULAR CAB		
CA or CT	141		
Chassis Class	CLASS 8 CHASSIS		
Engine Make	PACCAR		
Engine Model	PX9 D		
Engine HP	360		
Transmission	Automatic		
Transmission Speed	6		
FA Capacity	20,000		
RA Capacity	40,000		
Wheelbase	210		
Brakes	AIR		
Rear Suspension	HENDRICKSON HMX400		
Engine Size	PX9 D		
Engine Fuel Type	Diesel		
Axle Config	6x4		
GVWR (lb)	33001+		
Frame	SINGLE		
PTO Options	YES		

DISCLAIMER: Price quoted includes any applicable FET. Quoted price is Ex Works and does not include any freight / delivery charges, sales tax, titling fees, or registration fees. Specifications are believed to be correct but may contain errors and/or omissions. Pictures are representative and may not be identical. Description and Images Custom Truck One Source