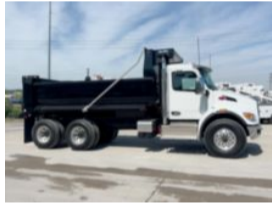


2025 Peterbilt 548 6x4 16' Load King Dump Truck
\$ 186,960

Stock SM713637 VIN 2NP8LJ0X0SM713637



Truck Specifications		Unit Specifications	
Year	2025	Bed/Body Make	Load King
Make	Peterbilt	Bed/Body Model	LKEXD16-0423/16
Model	548		
Cab Type	REGULAR CAB		
CA or CT	141		
Chassis Class	CLASS 8 CHASSIS		
Engine Make	PACCAR		
Engine Model	PX9 D		
Engine HP	360		
Transmission	Automatic		
Transmission Speed	6		
FA Capacity	20,000		
RA Capacity	40,000		
Wheelbase	210		
Brakes	AIR		
Rear Suspension	HENDRICKSON HMX400		
Engine Size	PX9 D		
Engine Fuel Type	Diesel		
Axle Config	6x4		
GVWR (lb)	33001+		
Frame	SINGLE		
PTO Options	YES		