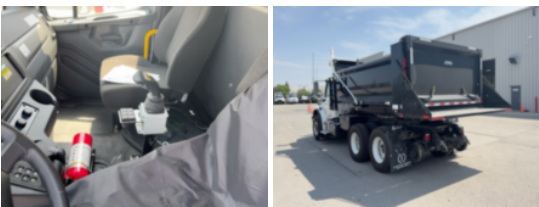


2025 Freightliner M2106 6x4 14' Load King Hi-Rail Dump

Call for price

Stock SDWA2452 VIN 3ALHCYFC2SDWA2452



Hi-Rail Specifications		Unit Specifications	
Year	2025	Attachment Year	2025
Make	Freightliner	Bed/Body Make	Load King
Model	M2106	Bed/Body Model	LKEXD14X421/4DB
Cab Type	REGULAR CAB		
CA or CT	118		
Chassis Class	CLASS 8 CHASSIS		
Engine Make	CUMMINS		
Engine Model	6.7L D		
Engine HP	325		
Transmission	Automatic		
Transmission Speed	6		
FA Capacity	18,000		
RA Capacity	40,000		
Wheelbase	184		
Brakes	AIR		
Rear Suspension	HENDRICKSON RT 403		
Engine Size	6.7		
Engine Fuel Type	Diesel		
Axle Config	6x4		
GVWR (lb)	33001+		
Frame	SINGLE		
PTO Options	YES		