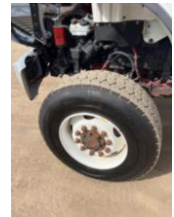
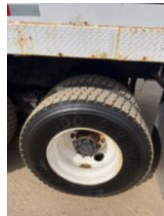
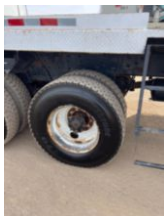
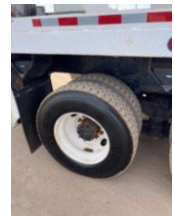


GENERAL 80 2015 FREIGHTLINER M2106

Call for price

Stock FDGD2647 VIN 3ALHCYCY1FDGD2647



Detailed Specification

Attached Body	GENERAL 80	Attachment Year	2014
Axle Config	6x6	Block Heater	YES
Brakes	AIR	Cab Type	REGULAR CAB
Characteristic Type	80' DIGGER DERRICK	Current Meter Reading	38037
Engine Hours	4230.000000	Engine Hp	330
Engine Make	Cummins	Engine Model	ISL 8.9L
Engine Size	8.9	FA Capacity	18000
Fuel Tank Capacity	50	RA Capacity	40000
Rear Axle Ratio	4.88	Rear End Ratio	4.88
Rear Suspension	Walking Beam	Transmission	Auto
Transmission Model	3500 RDS	Transmission Speed	6
Wheelbase	208		