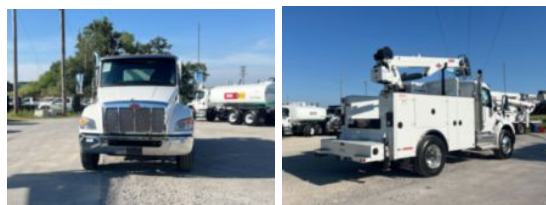


2026 Peterbilt 536 4x2 IMT DOM3 Service Truck w/ 12000-
\$ 237,995

Stock TM789043 VIN 2NPKHM6X8TM789043



Truck Specifications		Unit Specifications	
CARB Registered	No	Attachment Year	2025
Year	2026	Attachment Make	IMT
Make	Peterbilt	Attachment Model	12000-25
Model	536	Bed/Body Make	IMT
Cab Type	REGULAR CAB	Bed/Body Model	IMTDOM3MU084CS
CA or CT	89	Air Compressor	Yes
Chassis Class	CLASS 6 CHASSIS	Service Crane Capacity (lb)	12000
Engine Make	PACCAR	Rear Stabilizer	Yes
Engine Model	PX7 D	Remote Control	Yes
Engine HP	300	Service Body Length (ft)	11
Transmission	Automatic		
Transmission Speed	6		
FA Capacity	10,000		
RA Capacity	21,000		
Wheelbase	156		
Brakes	AIR		
Rear Suspension	NEWAY		
Engine Size	6.7		
Engine Fuel Type	Diesel		
Axle Config	4x2		
GVWR (lb)	26,000		
Frame	SINGLE		
PTO Options	YES		