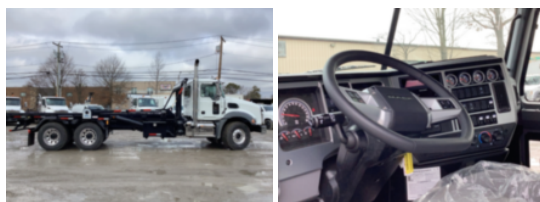


2026 Mack GR64BR 6x4 Palfinger ARH-75-22 Roll-Off Truck
\$ 291,675

Stock TM055438 VIN 1M2GR4GC0TM055438



Truck Specifications		Unit Specifications	
Year	2026	Attachment Year	2025
Make	Mack	Attachment Make	Palfinger
Model	GR64BR	Attachment Model	ARH-75-22
Cab Type	REGULAR CAB		
CA or CT	188		
Chassis Class	CLASS 8 CHASSIS		
Engine Make	Mack		
Engine Model	MP8 D		
Engine HP	445		
Transmission	Automatic		
Transmission Speed	6		
FA Capacity	20,000		
RA Capacity	52,000		
Wheelbase	254		
Brakes	AIR DISC		
Pusher Axle(s)	(1) 20K S		
Rear Suspension	SPRING		
Engine Size	MP8 D		
Engine Fuel Type	Diesel		
Axle Config	6x4		
GVWR (lb)	72,000		
Frame	DOUBLE		
PTO Options	YES		