



# 2014 Tadano Mantis 9010

Telescopic Boom Crawler Crane

Equip.# RA214335

## EQUIPMENT SPECS

### UNIT INFORMATION

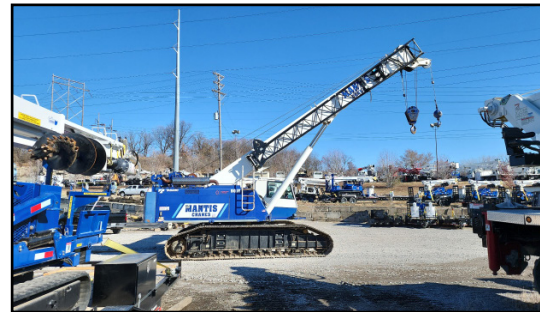
- S/N: 90-158
- 2536 Hours
- 45-Ton Capacity @ 10 Ft.
- 4-Section 34 Ft. - 105 Ft. Boom
- Dual Winches
- Video Camera On Winches
- Rooster Sheave
- 2-Piece Bi-Fold Swing Away Lattice Jib
- Tadano LMI System
- 15,000 LB. Counterweight
- 12-Ton Hook Ball S/N: 13-14683
- 45-Ton Block S/N: 13-10642
- Cab A/C & Heat
- 36 Inch Track Width

### ENGINE

- Cummins QSB6.7
- 265 HP

### PERSONNEL BASKET

- 2016 Mantis 2-Person Basket
- 750 LB. Max. Capacity
- Includes Transition Plate & Test Weight



Unit Being Sold AS-IS/WHERE-IS  
Ask About Our Preferred Transportation Vendors

888-684-8146 | [www.customtruck.com](http://www.customtruck.com)

ASK ABOUT THE CUSTOMIZED AND FLEXIBLE LEASING & FINANCING SOLUTIONS AVAILABLE FROM CUSTOM TRUCK CAPITAL

DISCLAIMER: Specifications are believed to be correct, but may contain errors and/or omissions. Pictures are representative and may not be identical.

For Info Scan/  
Click Here



- PRICE: \$375,500
- STOCK#: 90-158
- EX WORKS: Kansas City, MO

QUOTE NUMBER: JD2.12-K\_21

EXPIRATION DATE: 03/31/2023