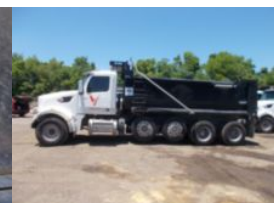


**2026 Peterbilt 567 10x4 18' Load King Dump Truck**
**\$ 240,000**

Stock TD789127 VIN 1NPCX4TX1TD789127



Truck Specifications		Unit Specifications	
<b>CARB Registered</b>	No	<b>Attachment Make</b>	Load King
<b>Year</b>	2026	<b>Attachment Model</b>	18' Dump Truck
<b>Make</b>	PETERBILT	<b>Bed/Body Make</b>	Load King
<b>Model</b>	567	<b>Bed/Body Model</b>	LKEXD18-0543/16
<b>Cab Type</b>	REGULAR CAB		
<b>CA or CT</b>	166		
<b>Chassis Class</b>	Dump		
<b>Engine Make</b>	Cummins		
<b>Engine Model</b>	X15 14.9l		
<b>Engine HP</b>	525		
<b>Transmission</b>	Auto		
<b>Transmission Speed</b>	6		
<b>FA Capacity</b>	20,000		
<b>RA Capacity</b>	73,000		
<b>Rear Axle Ratio</b>	4.3		
<b>Wheelbase</b>	255		
<b>Current Meter Reading (mi)</b>	16,436		
<b>Brakes</b>	AIR DISC		
<b>Fuel Tank Capacity (gal)</b>	90		
<b>Pusher Axle(s)</b>	(2) 13.5K S		
<b>Rear Suspension</b>	Walking Beam		
<b>Engine Size</b>	14.9		
<b>Engine Fuel Type</b>	Diesel		
<b>Axle Config</b>	10x4		
<b>GVWR (lb)</b>	85,000		
<b>Frame</b>	Steel		
<b>PTO Options</b>	YES		
<b>Transmission Make</b>	Allison		