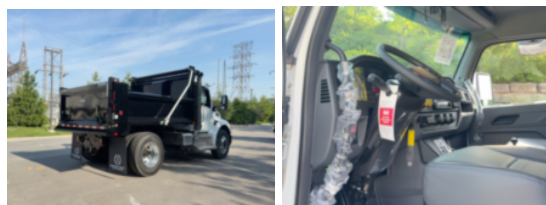


**2026 Peterbilt 537 4x2 10' Load King Dump Truck**

**\$ 149,138**

Stock TM789375 VIN 2NPMHJ7X3TM789375



Truck Specifications		Unit Specifications	
<b>CARB Registered</b>	No	<b>Attachment Year</b>	2025
<b>Year</b>	2026	<b>Bed/Body Make</b>	Load King
<b>Make</b>	Peterbilt	<b>Bed/Body Model</b>	LKSXD10X293/16
<b>Model</b>	537		
<b>Cab Type</b>	REGULAR CAB		
<b>CA or CT</b>	85		
<b>Chassis Class</b>	CLASS 7 CHASSIS		
<b>Engine Make</b>	PACCAR		
<b>Engine Model</b>	PX9 D		
<b>Engine HP</b>	330		
<b>Transmission</b>	Automatic		
<b>Transmission Speed</b>	6		
<b>FA Capacity</b>	12,000		
<b>RA Capacity</b>	21,000		
<b>Wheelbase</b>	152		
<b>Brakes</b>	AIR		
<b>Rear Suspension</b>	REYCO		
<b>Engine Size</b>	PX9 D		
<b>Engine Fuel Type</b>	Diesel		
<b>Axle Config</b>	4x2		
<b>GVWR (lb)</b>	33,000		
<b>Frame</b>	SINGLE		
<b>PTO Options</b>	YES		