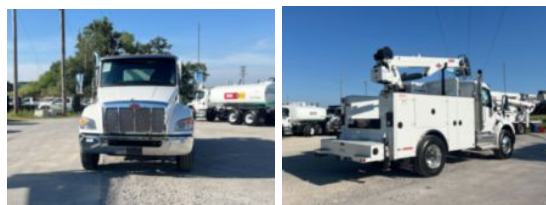


**2026 Peterbilt 536 4x2 IMT DOM3 Service Truck w/ 12000-**

**\$ 237,995**

Stock TM789035 VIN 2NPKHM6X9TM789035



Truck Specifications		Unit Specifications	
<b>CARB Registered</b>	No	<b>Attachment Year</b>	2025
<b>Year</b>	2026	<b>Attachment Make</b>	IMT
<b>Make</b>	Peterbilt	<b>Attachment Model</b>	12000-25
<b>Model</b>	536	<b>Bed/Body Make</b>	IMT
<b>Cab Type</b>	REGULAR CAB	<b>Bed/Body Model</b>	IMTDOM3MU084CS
<b>CA or CT</b>	89	<b>Air Compressor</b>	Yes
<b>Chassis Class</b>	CLASS 6 CHASSIS	<b>Service Crane Capacity (lb)</b>	12000
<b>Engine Make</b>	PACCAR	<b>Rear Stabilizer</b>	Yes
<b>Engine Model</b>	PX7 D	<b>Remote Control</b>	Yes
<b>Engine HP</b>	300	<b>Service Body Length (ft)</b>	11
<b>Transmission</b>	Automatic		
<b>Transmission Speed</b>	6		
<b>FA Capacity</b>	10,000		
<b>RA Capacity</b>	21,000		
<b>Wheelbase</b>	156		
<b>Brakes</b>	AIR		
<b>Rear Suspension</b>	NEWAY		
<b>Engine Size</b>	6.7		
<b>Engine Fuel Type</b>	Diesel		
<b>Axle Config</b>	4x2		
<b>GVWR (lb)</b>	26,000		
<b>Frame</b>	SINGLE		
<b>PTO Options</b>	YES		