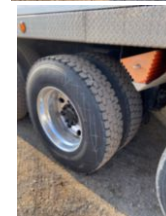
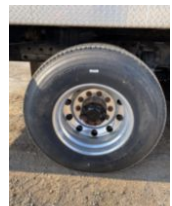


TM125 2015 Peterbilt 365

\$ 309,500

Stock FD248951 VIN 1NPSX7TX8FD248951



Detailed Specification

Engine Make	CUMMINS	Engine HP	425
Engine Model	ISX	Transmission	Automatic
Axle Config	8x6	Meter Reading	31423.000000
FA Capacity	20000	Characteristic Type	125' BUCKET
RA Capacity	66000	Max Work Height	125
Cab Type	REGULAR CAB		
Attached Body	TM125		
Wheelbase	253		