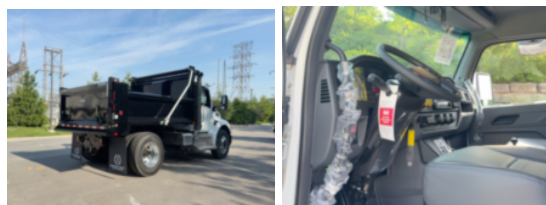


2026 Peterbilt 536 4x2 10' Load King Dump Truck

\$ 149,138

Stock TM789369 VIN 2NPMHJ7X8TM789369



Truck Specifications		Unit Specifications	
CARB Registered	No	Attachment Year	2025
Year	2026	Bed/Body Make	Load King
Make	Peterbilt	Bed/Body Model	LKSXD10X293/16
Model	537		
Cab Type	REGULAR CAB		
CA or CT	85		
Chassis Class	CLASS 7 CHASSIS		
Engine Make	PACCAR		
Engine Model	PX9 D		
Engine HP	330		
Transmission	Automatic		
Transmission Speed	6		
FA Capacity	12,000		
RA Capacity	21,000		
Wheelbase	152		
Brakes	AIR		
Rear Suspension	REYCO		
Engine Size	PX9 D		
Engine Fuel Type	Diesel		
Axle Config	4x2		
GVWR (lb)	33,000		
Frame	SINGLE		
PTO Options	YES		