



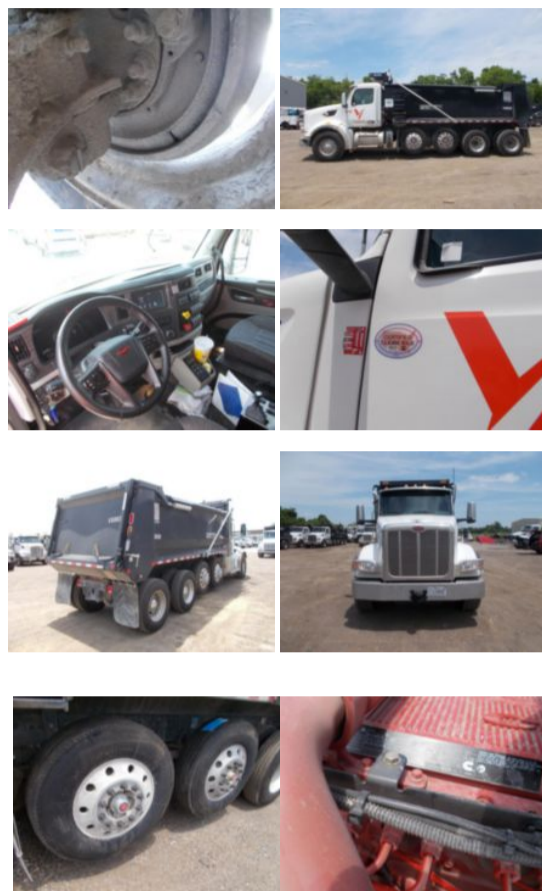
Custom Truck One Source

Alexandria,
 Phone: (866) 411-2293
<https://www.customtruck.com/locations>

2026 Peterbilt 567 10x4 19' Load King Dump Truck

\$ 240,000

Stock TD800038 VIN 1NPCX4EX8TD800038



Truck Specifications		Unit Specifications	
CARB Registered	No	Attachment Year	2025
Year	2026	Attachment Make	Load King
Make	PETERBILT	Attachment Model	19' Dump Truck
Model	567	Bed/Body Make	Load King
Cab Type	REGULAR CAB	Bed/Body Model	LKXD19X603/16DB
CA or CT	171	Dump Body Length (ft)	19
Chassis Class	Dump	Dump Body Type	Elliptical
Engine Make	Cummins	Dump Load (cu yd)	21
Engine Model	X15 14.9L		
Engine HP	525		
Transmission	Auto		
Transmission Speed	6		
FA Capacity	20,000		
RA Capacity	73,000		
Rear Axle Ratio	4.3		
Wheelbase	256		
Current Meter Reading (mi)	16,122		
Engine Hours (hr)	23		
Brakes	AIR DISC		
Fuel Tank Capacity (gal)	70		
Pusher Axle(s)	(2) 13.5K S		
Rear Suspension	Walking Beam		
Engine Size	14.9		
Engine Fuel Type	Diesel		
Axle Config	10x4		
GVWR (lb)	85,000		
Frame	Steel		
PTO Options	YES		
Transmission Make	Allison		

DISCLAIMER: Price is an estimation and does not include any freight/delivery charges, sales tax, titling fees, or registration fees. 8% buyer's fee applies on all purchases. Price is subject to change. Specifications are believed to be correct but may contain errors and/or omissions. Pictures shown represent the state of the vehicle at the time of the third-party, non-bias inspection. Unit is being sold AS-IS, WHERE-IS.