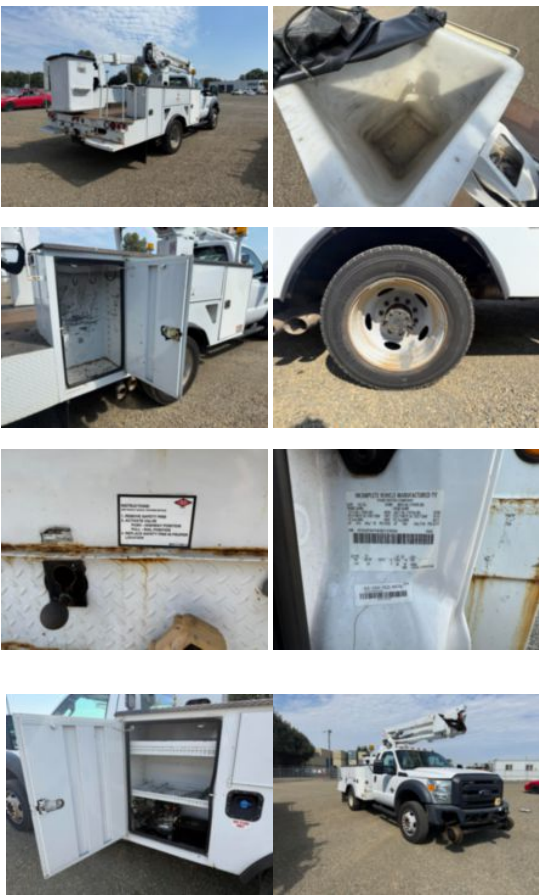


2016 Ford F-550 Diesel 4x4 "2005" Terex TL-38 Rail Gear

Call for price

Stock GEC53892 VIN 1FDUF5HT4GEC53892



Truck Specifications		Unit Specifications	
Year	2016	Attachment Year	2005
Make	FORD	Attachment Make	Terex
Model	F550	Attachment Model	TL38
Cab Type	REGULAR CAB	Maximum Work Height (ft)	43
Chassis Class	Truck		
Engine Make	Ford		
Engine Model	V8 6.7L		
Engine HP	440		
Transmission Make	Ford		
Transmission	Auto		
Transmission Speed	6		
FA Capacity	7,000		
RA Capacity	14,706		
Rear Axle Ratio	4.88		
Wheelbase	141		
Current Meter Reading	18,460		
Engine Hours	2		
Brakes	HYDRAULIC		
Fuel Tank Capacity (gal)	40		
Rear Suspension	Spring		
Engine Size	6.7		
Engine Fuel Type	Diesel		
Axle Config	4x4		
GVWR (lb)	19,500		
Frame	Steel		
PTO Options	YES		
Running Condition	Running		