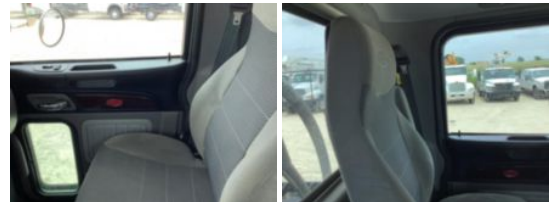


**45127R 2016 Peterbilt 367**

**\$ 267,500**

Stock GD307491 VIN 1NPTX4TX5GD307491



**Detailed Specification**

<b>Engine Make</b>	CUMMINS	<b>Engine HP</b>	450
<b>Engine Model</b>	ISX15	<b>Transmission</b>	Manual
<b>Axle Config</b>	10x6	<b>Meter Reading</b>	20638.000000
<b>FA Capacity</b>	22000	<b>Characteristic Type</b>	45 TON BOOM TRUCK
<b>RA Capacity</b>	60000		
<b>Pusher Axle(s)</b>	(1) 8K S		
<b>Cab Type</b>	REGULAR CAB		
<b>Attached Body</b>	45127R		