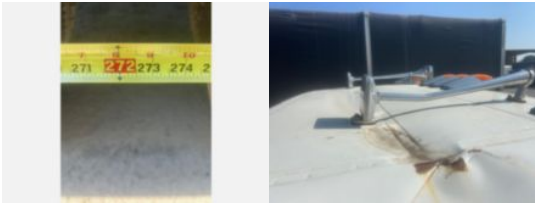
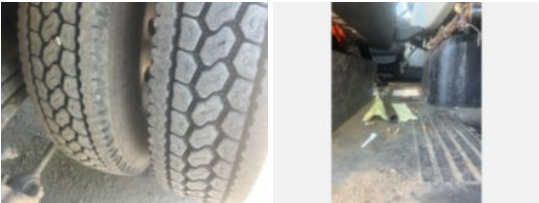


2018 Westernstar 4700 Tri-Axle Drywall Delivery Truck

Call for price

Stock JLJY9531 VIN 5KKHAXDV1JLJY9531



Truck Specifications		Unit Specifications	
Year	2018	Attachment Make	Western
Make	WESTERN STAR	Attachment Model	4700
Model	4700		
Chassis Class	Truck		
Engine Make	Detroit		
Engine Model	DD13 12.8L		
Engine HP	470		
Transmission Make	Eaton		
Transmission	Auto		
Transmission Speed	18		
FA Capacity	20,000		
RA Capacity	59,200		
Rear Axle Ratio	5.22		
Wheelbase	272		
Fuel Tank Capacity (gal)	100		
Rear Suspension	TufTrac		
Engine Fuel Type	Diesel		
GVWR (lb)	79,200		
Frame	Steel		
Running Condition	Not Running		