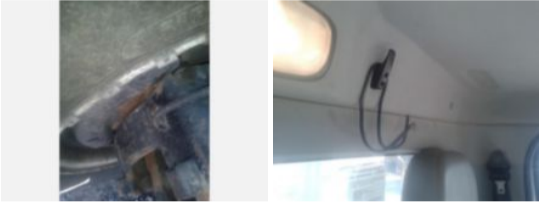
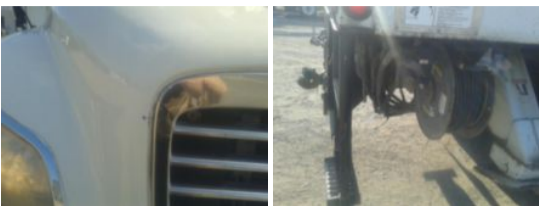


2016 Freightliner M2 Diesel 4x4 Terex Commander 4047

Call for price

Stock GHGW0528 VIN 1FVDCXDT7GHGW0528



Truck Specifications		Unit Specifications	
Year	2016	Attachment Year	2015
Make	FREIGHTLINER	Attachment Make	Terex
Model	M2106	Attachment Model	Commander 4047
Cab Type	REGULAR CAB	Maximum Work Height (ft)	52
CA or CT	124		
Chassis Class	Truck		
Engine Make	Cummins		
Engine Model	ISB 6.7L		
Engine HP	250		
Transmission Make	Allison		
Transmission	Auto		
Transmission Speed	6		
FA Capacity	14,000		
RA Capacity	21,000		
Rear Axle Ratio	5.57		
Wheelbase	190		
Current Meter Reading	63,765		
Brakes	AIR		
Fuel Tank Capacity (gal)	50		
Rear Suspension	Spring		
Engine Size	6.7		
Engine Fuel Type	Diesel		
Axle Config	4x4		
GVWR (lb)	33,000		
Frame	Steel		
PTO Options	YES		
Running Condition	Running		