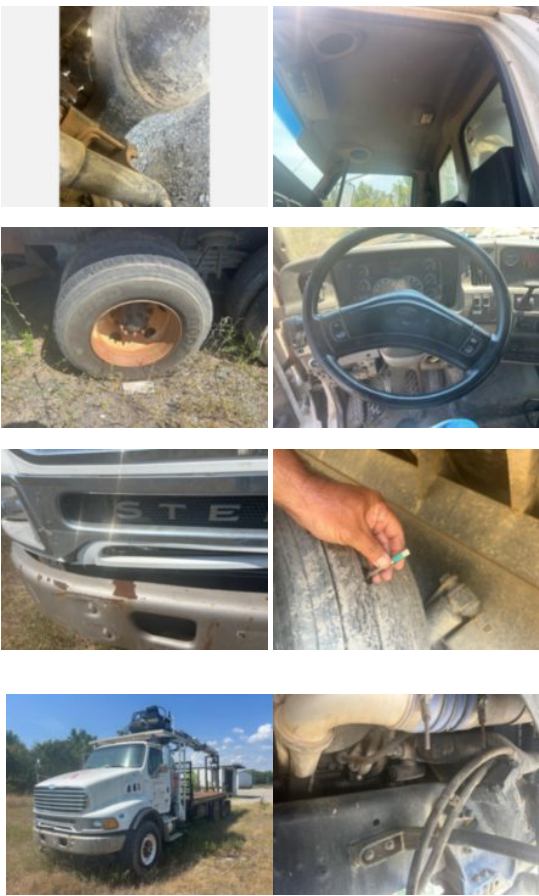


2006 Sterling LT-9513 IMT 16000 Drywall Delivery Truck

Call for price

Stock 6AV18878 VIN 2FZHAZCV06AV18878



Truck Specifications		Unit Specifications	
Year	2006	Attachment Make	Sterling
Make	STERLING	Attachment Model	L9500
Model	L9500		
Chassis Class	Truck		
Engine Make	Mercedes		
Engine Model	I6 12.0L		
Transmission Make	Eaton		
Transmission	Manual		
Transmission Speed	10		
FA Capacity	20,000		
RA Capacity	55,000		
Rear Axle Ratio	4.56		
Fuel Tank Capacity (gal)	100		
Rear Suspension	Spring		
Engine Fuel Type	Diesel		
GVWR (lb)	75,000		
Frame	Steel		
Running Condition	Not Running		