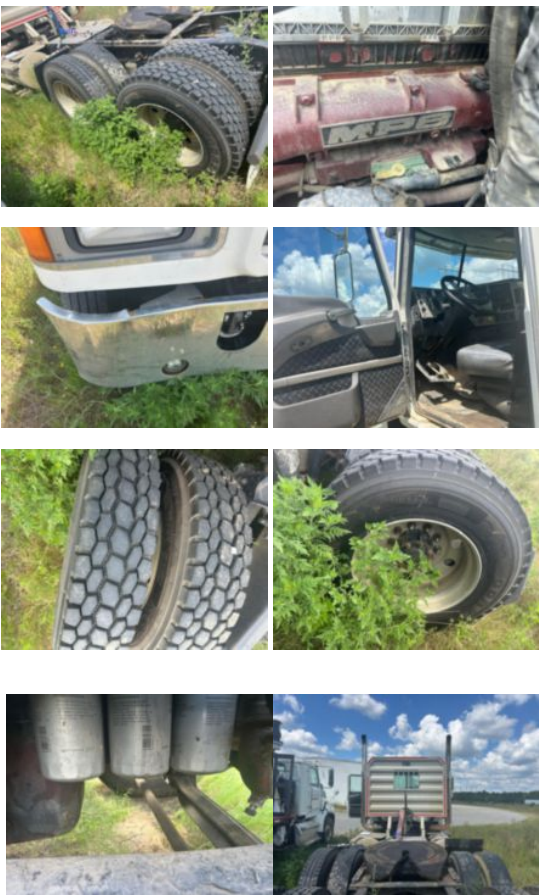


2016 Mack CHU613 Tandem Axle Day Cab

Call for price

Stock GM021595 VIN 1M1AN07Y0GM021595



Unit Specifications		Unit Specifications	
Year	2016		
Make	MACK		
Model	CHU613		
Chassis Class	Tractor		
Engine Make	Mack		
Engine Model	MP8-445C 12.8L		
Engine HP	445		
Transmission Make	Mack		
Transmission	I-Shift		
Transmission Speed	12		
FA Capacity	12,000		
RA Capacity	40,000		
Fuel Tank Capacity (gal)	175		
Rear Suspension	Air Ride		
Engine Fuel Type	Diesel		
GVWR (lb)	52,000		
Frame	Steel		
Running Condition	Not Running		