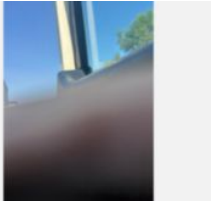
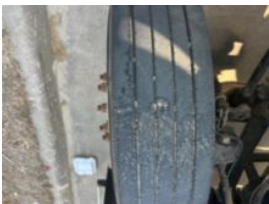


2015 Mack CXU613 Tandem Axle Day Cab

Call for price

Stock FM051791 VIN 1M1AW09Y6FM051791



Unit Specifications		Unit Specifications	
Year	2015		
Make	MACK		
Model	CXU613		
Chassis Class	Tractor		
Engine Make	Mack		
Engine Model	MP8 12.8L		
Engine HP	415		
Transmission Make	Mack		
Transmission	Auto		
Transmission Speed	12		
FA Capacity	12,000		
RA Capacity	40,000		
Rear Axle Ratio	3.07		
Fuel Tank Capacity (gal)	200		
Rear Suspension	Air Ride		
Engine Fuel Type	Diesel		
GVWR (lb)	52,000		
Frame	Steel		
Running Condition	Not Running		