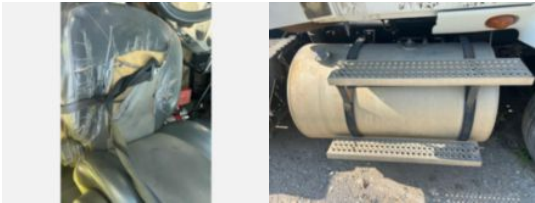


2011 Int'l Prostar Tandem Axle Day Cab

Call for price

Stock BN194013 VIN 3HSCUAPR4BN194013



Unit Specifications		Unit Specifications	
Year	2011		
Make	INTERNATIONAL		
Model	Prostar		
Chassis Class	Tractor		
Engine Make	Cummins		
Engine Model	ISX15 14.9L		
Engine HP	435		
Transmission Make	Fuller		
Transmission	Manual		
Transmission Speed	10		
FA Capacity	12,000		
RA Capacity	40,000		
Rear Axle Ratio	3.55		
Wheelbase	175		
Fuel Tank Capacity (gal)	200		
Rear Suspension	Air Ride		
Engine Fuel Type	Diesel		
GVWR (lb)	52,000		
Frame	Steel		
Running Condition	Not Running		