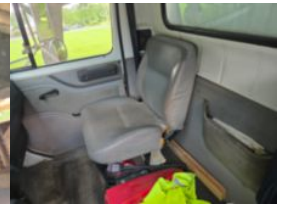
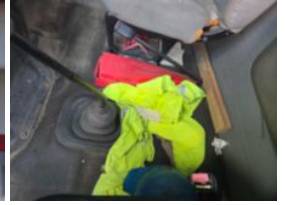


PROD TEST UNIT - NOT FOR SALE! 1997 Int'l Diesel 4x2

Call for price

Stock VH449670 VIN 1HTSDAAN7VH449670



Truck Specifications		Unit Specifications	
Year	1997	Attachment Make	International
Make	INTERNATIONAL	Attachment Model	4900
Model	4900		
Chassis Class	Truck		
Engine Make	International		
Engine Model	7.6L L6		
Transmission	Manual		
Transmission Speed	6+1		
Rear Axle Ratio	5.38		
Wheelbase	254		
Current Meter Reading (mi)	177,656		
Rear Suspension	Spring		
Engine Fuel Type	Diesel		
Frame	Steel		
Transmission Make	International		
Running Condition	Running		