



# 2019 Freightliner M2106 4x4 Terex C4047 Digger Derrick

Equipment# B0124468

## CHASSIS SPECS

### UNIT INFORMATION

VIN: 1FVDCXFC0KHKA6815  
Dash: 112,137 Miles  
Single Axle  
Air Brakes  
Single Frame  
Pintle Hitch W/Air & Electric

### CAB FEATURES

Standard Daycab  
Aerodynamic Mirrors  
Air & City Horns

### INTERIOR FEATURES

Mid Level Interior  
A/C Equipped  
Manual Windows  
Manual Door Locks  
High Back Air Ride  
Driver Seat  
Mid Back Fixed  
2-Passenger Bench Seat  
Cruise Control  
AM/FM/AUX  
Bluetooth  
Tilt/Tele Steering Column

### FUEL TANK(S)

LH 50 Gallon Aluminum  
DEF Tank

### GVWR

33,000 Lbs.

### FRONT AXLE

14,000 Lbs. FAWR

### REAR AXLE(S)

21,000 Lbs. RAWR  
Ratio: 5.57

### REAR SUSPENSION

Spring

### ENGINE

Cummins ISB  
300 Horsepower  
S/N: 74263504  
Dash: 7,797 Hours  
Block Heater  
RH Horizontal Exhaust

### TRANSMISSION

Allison 3500 RDS

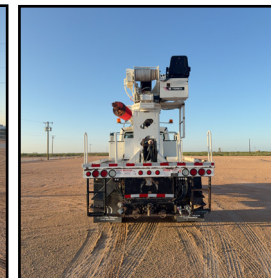
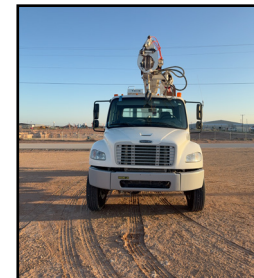
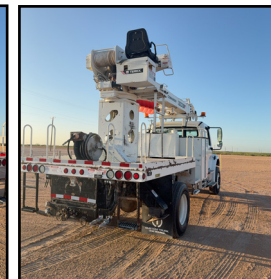
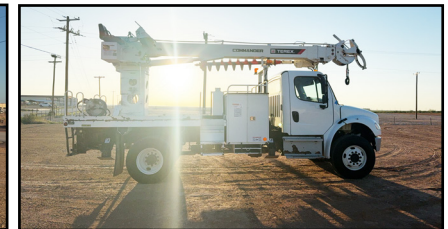
### TIRES/WHEELS

Front Tire: 12R22.5  
Front Wheel: Steel  
Rear Tire: 12R22.5  
Rear Wheel: Steel

## EQUIPMENT SPECS

2018 Terex C4047 Digger  
S/N: 2180262746  
Sheave Height: 47 Ft.  
Digging Radius: 26 Ft.  
Horizontal Reach: 37 Ft.  
10,230 Lbs. Capacity @ 9.6 Ft.  
Turret Mount Winch  
Insulated 46KVAC Category C  
360 Continuous Rotation  
Lower Hydraulic Tool Circuit  
Pole Claws

Dakota Bodies  
T-Box Flatbed  
LH (1) Tool Cabinet  
RH (1) Tool Cabinet W/Steps  
Front & Rear  
A-Frame Outriggers  
Hydraulic Hose Reel



**Unit Being Sold AS-IS/WHERE-IS**  
**Qualifies For An Extended Warranty**  
**See Pages 2-3 For More Info**

888-684-8146

[www.customtruck.com](http://www.customtruck.com)

ASK ABOUT THE CUSTOMIZED AND FLEXIBLE LEASING & FINANCING  
SOLUTIONS AVAILABLE FROM CUSTOM TRUCK CAPITAL  
DISCLAIMER: Specifications are believed to be correct, but may contain errors  
and/or omissions. Pictures are representative and may not be identical.

Click / Scan For Info



PRICE: \$129,500

STOCK#: KHKA6815

EX WORKS: Odessa, TX

QUOTE NUMBER: AD2.10-G\_25 Tier B

EXPIRATION DATE: 12/31/2025



# Specialty Truck Warranty with Rear Apparatus

## Each Warranty Program Includes:

Engine, Critical Components (turbos, fuel injectors, fuel pump, water pump, ECM), Transmission and Rear Differential.  
Rear Apparatus coverage includes: Electrical and Hydraulic System.

### TRUCKS FROM RENTAL FLEET

24 Months / 50,000 Miles	Class 3-5	Class 6-8
Single-axle boom / bucket trucks, with no swing cab	\$5,075	\$6,000
Tandem-axle boom / bucket trucks and digger derricks	N/A	\$7,000
All units with swing cabs (riding units)	N/A	\$8,000

**\$350 deductible per occurrence**

**Additional coverage options**

**Aftertreatment**

24 Months **\$1,250**

**Comfort Package**

24 Months **\$950**

See contract for all details. See back for coverage summary. All costs are in US dollars.



# Specialty Truck Warranty with Rear Apparatus

## Covered Components Summary

CC = Included in Critical Components  
LOL = Limits of Liability

Coverage Exclusions: Please refer to your contract for complete list and details of covered and non-covered items.

### Engine (LOL: \$15,000 for Class 3-5; \$22,500 for Class 6-8)

#### Engine's internally lubricated hard parts include:

- Camshaft and Cam Bearings
- Cam Followers
- Connecting Rods
- Connecting Rod Bearings
- Connecting Rod Caps and Screws
- Crankshaft
- Cylinder Block Casting
- Cylinder Head
- Cylinder Head Gasket
- Cylinder Liners
- Cylinder Head Bolts
- Hydraulic Lifters
- Injector Cups
- Intake and Exhaust Valves
- Intake and Exhaust Valve Guides
- Main Bearings
- Oil Cooler and Housing
- Oil Pan
- Oil Pump Pick Up Screen
- Oil Pump Pick Up Tube\*
- Oil Pump Pressure Relief Springs and Valves
- Pistons, Piston Rings, and Piston Oil Cooling Jets
- Power Take Off (PTO)
- Pushrods
- Rocker Arms and Rocker Arm Shafts
- Thrust Washers
- Timing Gears
- Timing Gear Cover and Housing
- Valve Cover
- Valve Retainers and Keepers (Locks)
- Valve Seats
- Valve Springs
- Wrist Pins

#### "Non-oil" related components:

- Exhaust Manifold
- Flywheel Housing
- Intake Manifold
- Thermostat Housing
- Vibration Dampener

\* For Detroit Diesels, breakdowns originating from the "oil pump pick up tube O-ring" will only be covered if the TSB D18M3 has been performed by a certified OEM repair shop.

### (CC) Engine Fuel Injectors, Water Pump, Fuel Pump & ECM (LOL \$5,000)

#### Covered Components:

- Complete Injector
- Fuel Injector Hard Lines
- Fuel Injection Pump
- Fuel Pump
- Engine Control Module (ECM)
- Water Pump

### (CC) Turbo (LOL \$7,500)

#### Turbochargers include:

- Bearings
- Internal Variable Vane Assembly
- Turbine and Turbine Shaft
- Turbo Actuator

### Transmission (LOL: \$6,000 for Class 3-5; \$7,500 for Class 6-8)

#### Internally lubricated hard parts of the manual or automatic transmission include:

- |             |                    |
|-------------|--------------------|
| • Bands     | • Oil Pump         |
| • Bearings  | • Shaft(s)         |
| • Blockers  | • Shift Forks      |
| • Bushings  | • Synchronizers    |
| • Drums     | • Thrust Washers   |
| • Gear Sets | • Torque Converter |
| • Governor  | • Valve Body       |

### Differential (LOL: \$6,000 for Class 3-5; \$7,500 for Class 6-8)

#### Internally lubricated hard parts include:

- Axle Housing
- Axle Shafts
- Bearings
- Bushings
- Carrier Case
- Gear Sets
- Limited Slip Clutch Pack

#### Power Divider includes:

- Bearings
- Gears
- Shafts
- Shift Forks

### Model Year 2014 & Older Aftertreatment (LOL: \$7,000 for Class 3-5; \$8,000 for Class 6-8)

#### Covered Components:

- Aftertreatment Electronic Control Module (ACM)
- Diesel Exhaust Fluid (DEF) Module with Injection Nozzle
- DEF Tank
- Diesel Oxidation Catalyst (DOC)
- DOC Doser Injector
- Diesel Particulate Filter (DPF)
- DPF Dosing Module
- Exhaust Gas Recirculation (EGR) Valves
- EGR Cooler(s)
- Hydrocarbon Doser Injector (HC Doser, 7th Injector, ARD, AHI Module)
- Selective Catalytic Reduction (SCR) Catalyst
- Sensor, Lambda (O<sub>2</sub> Sensor)
- Sensor, NOx (2)

### Model Year 2015 & Newer Aftertreatment (LOL: \$7,000 for Class 3-5; \$8,000 for Class 6-8)

#### Includes all 2014 Covered Components plus:

- Back Pressure Control Valve (BPV)
- DEF Heater Control Relay
- DEF Dosing Module - Wiring Harness
- DEF Heated Lines (3)
- DEF Heater Coolant Control Valve
- DEF Heating Elements
- DEF Heating Fittings (3 on Supply Module)
- DEF Pump and Module
- DEF Solution Level/Temperature Sensor
- Diesel Particulate Filter (DPF)
- DPF Air, Fuel, and Coolant Lines
- DPF Air, Fuel, Manifold Assembly
- EGR Actuator
- EGR Connecting Bellows and Clamps
- Exhaust Piping, Clamps, and Gaskets
- Exhaust Throttle Valve
- Hydrocarbon Doser Valve - Air, Fuel, and Coolant Lines; and Inline Air Filter
- Hydrocarbon Doser Valve (Voss Valve)
- SCR Decomposition Pipe and Pipe Elbows
- Sensor, BPV Pressure
- Sensor, Delta P (DPF Pressure)
- Sensor, DOC Inlet Pressure
- Sensor, DOC (Post) Temperature
- Sensor, DOC (Pre) Temperature
- Sensor, DPF Air Supply Pressure
- Sensor, DPF Backpressure
- Sensor, DPF Fuel Pressure
- Sensor, Pressure After Exhaust Throttle Valve
- Sensor, SCR (Post) Temperature
- Sensor, SCR (Pre) Temperature
- Wiring Harness - Emission Systems (including overlay)

### Comfort Package (LOL \$6,000)

- Charge Air Cooler
- Radiator & Radiator Cap
- Fan Clutch
- Engine Air Compressor
- Alternator
- Starter & Starter Solenoid
- Engine Brake
- Fuel Tanks, Cap, & Valve
- Radio
- HVAC Blower Motor & Resister
- HVAC Temperature Controls, Control Head, & Control Valves
- HVAC Air Compressor & Pulley
- HVAC Fan Hub
- HVAC Heater Core

### Apparatus Coverage

(LOL: Single Axle \$15,000;  
Tandem Axle/Swing Cabs \$20,000)

### Electrical Components

- Electrical Motors
- Electrical Joysticks
- Factory Installed Electronic Controllers
- Engine Air Compressor
- Gauges
- Indicators
- Instruments
- Rotary Electric Motors
- Sensors
- Solenoid Valves
- Switches
- Wiring Harness

### Hydraulic System

- Actuators, Controllers & Sensor (Hydraulic Function ONLY)
- Hydraulic Cylinders
- Hydraulic Motors
- Hydraulic Oil Filter Base
- Hydraulic Oil Coolers
- Hydraulic Pump
- Hydraulic Swivel
- Hydraulic Valve
- PTO Pump

### Eligibility

- Class 3-8: Start miles up to 900,000 miles (on odometer or ECM), whichever is greater, for Agriculture High Mileage Vehicles and up to 400,000 miles for All Other Vehicles
- Class 3-5 warranty expiration capped at 500,000 total miles
- Class 6-8 warranty expiration capped at 1,000,000 total miles
- Model age must be 20 years from current year or newer

### Progressive Damage, Wearout & Carbon Packing

Please refer to your contract for details on Progressive Damage, Wearout and Carbon Packing coverage.

### Underwriting

- New engine oil and filter required
- Check fault codes & perform preventative maintenance
- Continuing OEM maintenance recommendations must be followed
- Road test /performance evaluation to identify performance & operational issues
- Wrap coverage begins at expiration of prior OEM coverage (by age or mileage)
- Visual inspection of warranted components: identify leaks at seals, gaskets, and housing; verify engine performance i.e. skips, misses, knocking, etc.
- Repair identified deficiencies to maintain RO's of related underwriting repairs