



2019 Ford F350 Crew Cab 4x4

Hi-Rail Service Truck

Equipment# H0125667

CHASSIS SPECS

UNIT INFORMATION

VIN: 1FT7W3B62KEE24169

Dash: 113,247 Miles

4x4 Single Axle

Hydraulic Brakes

Single Frame

Hitch Receiver W/Electric

CAB FEATURES

Crew Cab

Power Trailer Tow Mirrors

City Horn

INTERIOR FEATURES

Mid Level Interior

A/C Equipped

Power Windows

Power Door Locks

High Back Driver Seat

High Back Passenger Seat

Fold Down Center Console

High Back 3-Person Rear

Bench Seat

Cruise Control

AM/FM/AUX

Tilt Steering Column

GVWR

10,000 Lbs.

FRONT AXLE

5,990 Lbs. FAWR

REAR AXLE(S)

6,340 Lbs. RAWR

Ratio: 3.73

REAR SUSPENSION

Leaf Spring

ENGINE

Ford 6.2L V8

385 Horsepower

Dash: 10,212 Hours

RH Horizontal Exhaust

TRANSMISSION

Automatic

TIRES/WHEELS

Front Tire: 225/70R19.5

Front Wheel: Steel

Rear Tire: 225/70R19.5

Rear Wheel: Steel

FUEL TANK(S)

LH 34 Gallons

EQUIPMENT SPECS

Knapheide Body

Model: 696LP

S/N: 20181214-0610176

LH (3) Tool Cabinets

RH (3) Tool Cabinets

Body Length: 96 In.

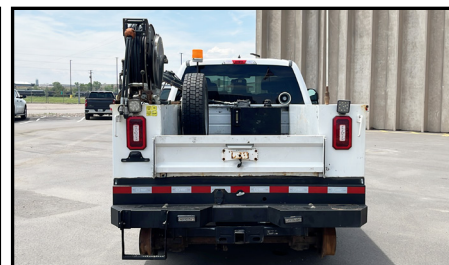
Body Height: 36 In.

Body Width: 78 In.

Tail Shelf W/Step

Hydraulic Hose Reel

Harsco Rail Gear W/Remotes



Unit Being Sold AS-IS/WHERE-IS

888-684-8146

www.customtruck.com

ASK ABOUT THE CUSTOMIZED AND FLEXIBLE LEASING & FINANCING SOLUTIONS AVAILABLE FROM CUSTOM TRUCK CAPITAL
DISCLAIMER: Specifications are believed to be correct, but may contain errors

Click / Scan For Info



PRICE: \$69,500

STOCK#: KEE24169

EX WORKS: Commerce City, CO

QUOTE NUMBER: BN1.05-F_25 Tier B

EXPIRATION DATE: 12/31/2025