



2018 Ford F-750 4x2 Hi Rail Flatbed Service Truck W/Crane

Equipment# 223774

CHASSIS SPECS

UNIT INFORMATION

VIN: 1FDWW7DC9JDF00864

Dash: 103,892 Miles

Single Axle

Air Brakes

Single Frame

Pintle Hitch W/ Electric

CAB FEATURES

Crew Cab

Tow Mirrors

Air & City Horns

INTERIOR FEATURES

Mid Level Interior

A/C Equipped

Power Windows

Power Door Locks

High Back Air Ride

Driver Seat

High Back Slide

Passenger Seat

High Back Fixed

3- Passenger Bench Seat

Cruise Control

AM/FM/AUX/CD

Bluetooth

Tilt Steering Column

GVWR

25,999 Lbs.

FRONT AXLE

12,000 Lbs. FAWR

REAR AXLE(S)

21,000 Lbs. RAWR

REAR SUSPENSION

Spring

ENGINE

6.7L Power Stroke

270 Horsepower

Dash: 6,079 Hours

Block Heater

RH Horizontal Exhaust

TRANSMISSION

Automatic W/OD

TIRES/WHEELS

Front Tire: 11R22.5

Front Wheel: Steel

Rear Tire: 11R22.5

Rear Wheel: Steel

FUEL TANK(S)

LH 65 Gallon Aluminum

DEF Tank

EQUIPMENT SPECS

Stellar 5521 Service Crane

S/N: G0018C826

3-Section Boom: 21 Ft. Extended

2,620 Lbs. Capacity @ 10 Ft.

Standard

3,090 Lbs. Capacity @ 10 Ft.

Boosted

360 Degree Rotation

Remote

C&S Body

Model: B-5464

S/N: 2829

LH (1) Tool Cabinet

RH (8) Tool Cabinets

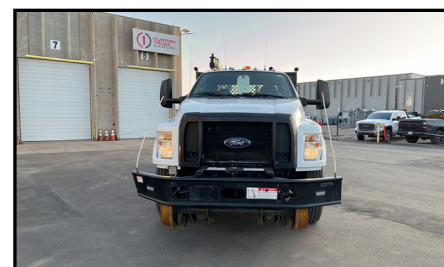
Length: 16 Ft.

Width: 8 Ft.

Rear Hydraulic Outriggers

DMF1420 Rail Gear

S/N: 43981/43982



**Unit Being Sold AS-IS/WHERE-IS
Qualifies For An Extended Warranty
See Pages 2-3 For More Info**

888-684-8146

www.customtruck.com

ASK ABOUT THE CUSTOMIZED AND FLEXIBLE LEASING & FINANCING
SOLUTIONS AVAILABLE FROM CUSTOM TRUCK CAPITAL

DISCLAIMER: Specifications are believed to be correct, but may contain errors
and/or omissions. Pictures are representative and may not be identical.

Click / Scan For Info



PRICE: \$99,500

STOCK#: JDF00864

EX WORKS: Commerce City, CO

QUOTE NUMBER: AD1.15-D_25 Tier B

EXPIRATION DATE: 12/31/2025



Specialty Trucks Warranty

CLASS 3-8, up to 20 years including the current calendar year; start miles <900K for Agriculture High Mileage Vehicles; <400K for All Other Vehicles.

RETAIL
Rates As Of November 16, 2020

Each Warranty Program Includes:

Engine, Critical Components (turbos, fuel injectors, fuel pump, water pump, ECM), Transmission and Rear Differential.

TRUCKS FROM RENTAL FLEETS	Class 3-5	Class 6-8
24 Months / 50,000 Miles	\$2,600	\$3,000
TRUCKS SOURCED OUTSIDE RENTAL FLEETS	Class 3-5	Class 6-8
12 Months / 25,000 Miles	\$2,400	\$2,700
12 Months / 50,000 Miles	\$2,800	\$3,200
24 Months / 50,000 Miles	\$3,000	\$3,500
24 Months / 100,000 Miles	\$3,500	\$4,000
AGRICULTURAL - LOW MILES <small>(Financed by Custom Trucks)</small>	Class 3-5	Class 6-8
12 Months / 20,000 Miles	\$2,100	\$2,300
24 Months / 20,000 Miles	\$2,300	\$2,600
36 Months / 30,000 Miles	\$2,500	\$3,000
AGRICULTURAL - HIGH MILES	Class 3-5	Class 6-8
12 Months / 10,000 Miles	\$2,200	\$2,500
24 Months / 20,000 Miles	\$2,400	\$2,700

\$350 deductible per occurrence

Additional coverage options

Aftertreatment
(must match warranty term)

12 Months \$950 **24 Months \$1,250** 36 Months \$1,550

Comfort Package
(must match warranty term)

12 Months \$799 **24 Months \$950** 36 Months \$1,100

Rates as of November 16, 2020

See contract for all details. See back for coverage summary. All costs are in US dollars.



Specialty Trucks Warranty

CLASS 3-8, up to 20 years including the current calendar year; start miles <900K for Agriculture High Mileage Vehicles; <400K for All Other Vehicles.

Covered Components Summary

CC = Included in Critical Components
LOL = Limits of Liability

Coverage Exclusions: Please refer to your contract for complete list and details of covered and non-covered items.

Engine (LOL: \$15,000 for Class 3-5; \$22,500 for Class 6-8)

Engine's internally lubricated hard parts include:

- Camshaft and Cam Bearings
- Cam Followers
- Connecting Rods
- Connecting Rod Bearings
- Connecting Rod Caps and Screws
- Crankshaft
- Cylinder Block Casting
- Cylinder Head
- Cylinder Head Gasket
- Cylinder Liners
- Cylinder Head Bolts
- Hydraulic Lifters
- Injector Cups
- Intake and Exhaust Valves
- Intake and Exhaust Valve Guides
- Main Bearings
- Oil Cooler and Housing
- Oil Pan
- Oil Pump Pick Up Screen
- Oil Pump Pick Up Tube*
- Oil Pump Pressure Relief Springs and Valves
- Pistons, Piston Rings, and Piston Oil Cooling Jets
- Pushrods
- Rocker Arms and Rocker Arm Shafts
- Thrust Washers
- Timing Gears
- Timing Gear Cover and Housing
- Valve Cover
- Valve Retainers and Keepers (Locks)
- Valve Seats
- Valve Springs
- Wrist Pins

*"Non-oil" related components:

- Exhaust Manifold
- Thermostat Housing
- Flywheel Housing
- Vibration Dampener
- Intake Manifold

* For Detroit Diesels, breakdowns originating from the "oil pump pick up tube O-ring" will only be covered if the TSB D18M3 has been performed by a certified OEM repair shop.

(CC) Turbo (LOL \$7,500)

Turbochargers include:

- Bearings
- Internal Variable Vane Assembly
- Turbine and Turbine Shaft
- Turbo Actuator

Transmission

(LOL: \$6,000 for Class 3-5;
\$7,500 for Class 6-8)

Internally lubricated hard parts of the manual or automatic transmission include:

- Bands
- Bearings
- Blockers
- Bushings
- Drums
- Gear Sets
- Governor
- Oil Pump
- Shaft(s)
- Shift Forks
- Synchronizers
- Thrust Washers
- Torque Converter
- Valve Body

Differential

(LOL: \$6,000 for Class 3-5;
\$7,500 for Class 6-8)

Internally lubricated hard parts include:

- Axle Housing
- Axle Shafts
- Bearings
- Bushings
- Carrier Case
- Gear Sets
- Limited Slip Clutch Pack

Power divider includes:

- Bearings
- Shafts
- Gears
- Shift Forks

(CC) Engine Fuel Injectors, Water Pump, Fuel Pump & ECM

(LOL \$5,000)

Covered Components:

- Complete Injector
- Fuel Injector Hard Lines
- Fuel Injection Pump
- Fuel Pump
- Engine Control Module (ECM)
- Water Pump

Progressive Damage, Wearout & Carbon Packing

Please refer to your contract for details on Progressive Damage, Wearout and Carbon Packing coverage.

Eligibility

- Class 3-8: Start miles up to 900,000 miles (on odometer or ECM), whichever is greater, for Agriculture High Mileage Vehicles and up to 400,000 miles for All Other Vehicles
- Class 3-5 warranty expiration capped at 500,000 total miles
- Class 6-8 warranty expiration capped at 1,000,000 total miles
- Model age must be 20 years from current year or newer

Aftertreatment, Model Year 2014 & Older (LOL: \$7,000 for Class 3-5; \$8,000 for Class 6-8)

Covered Components:

- Aftertreatment Electronic Control Module (ACM)
- Diesel Exhaust Fluid (DEF) Module with Injection Nozzle
- DEF Tank
- Diesel Oxidation Catalyst (DOC)
- DOC Doser Injector
- Diesel Particulate Filter (DPF)
- DPF Dosing Module
- Exhaust Gas Recirculation (EGR) Valves
- EGR Cooler(s)
- Hydrocarbon Doser Injector (HC Doser, 7th Injector, ARD, AHI Module)
- Selective Catalytic Reduction (SCR) Catalyst
- Sensor, Lambda (O₂ Sensor)
- Sensor, NOx (2)

Comfort Package (LOL \$6,000)

- Alternator
- Charge Air Cooler
- Engine Air Compressor
- Fan Clutch
- Fuel Tanks, Cap, & Valve
- HVAC Air Compressor & Pulley
- HVAC Blower Motor & Resistor
- HVAC Fan Hub
- HVAC Heater Core
- HVAC Temperature Controls, Control Head, & Control Valves
- Radiator & Radiator Cap
- Radio
- Starter & Starter Solenoid

Aftertreatment, Model Year 2015 & Newer (LOL: \$7,000 for Class 3-5; \$8,000 for Class 6-8)

Covered Components:

- Aftertreatment Electronic Control Module (ACM)
- Back Pressure Control Valve (BPV)
- Diesel Exhaust Fluid (DEF) Module with Injection Nozzle
- DEF Heater Control Relay
- DEF Dosing Module - Wiring Harness
- DEF Heated Lines (3)
- DEF Heater Coolant Control Valve
- DEF Heating Elements
- DEF Heating Fittings (3 on Supply Module)
- DEF Pump and Module
- DEF Solution Level/Temperature Sensor
- DEF Tank
- Diesel Oxidation Catalyst (DOC)
- Diesel Particulate Filter (DPF)
- DPF Air, Fuel, and Coolant Lines
- DPF Air, Fuel, Manifold Assembly
- DPF Dosing Module
- Exhaust Gas Recirculation (EGR) Valves
- EGR Actuator
- EGR Connecting Bellows and Clamps
- EGR Cooler(s)
- Exhaust Piping, Clamps, and Gaskets
- Exhaust Throttle Valve
- Hydrocarbon Doser Injector (HC Doser, 7th Injector, ARD, AHI Module)
- Hydrocarbon Doser Valve - Air, Fuel, and Coolant Lines; and Inline Air Filter
- Hydrocarbon Doser Valve (Voss Valve)
- Selective Catalytic Reduction (SCR) Catalyst
- SCR Decomposition Pipe and Pipe Elbows
- Sensor, BPV Pressure
- Sensor, Delta P (DPF Pressure)
- Sensor, DOC Inlet Pressure
- Sensor, DOC (Post) Temperature
- Sensor, DOC (Pre) Temperature
- Sensor, DPF Air Supply Pressure
- Sensor, DPF Back Pressure
- Sensor, DPF Fuel Pressure
- Sensor, Lambda (O₂ Sensor)
- Sensor, NOx (2)
- Sensor, Pressure After Exhaust Throttle Valve
- Sensor, SCR (Post) Temperature
- Sensor, SCR (Pre) Temperature
- Wiring Harness - Emission Systems (including overlay)

Underwriting

- Continuing OEM maintenance recommendations must be followed
- Check fault codes & perform preventative maintenance
- New engine oil and filter required

- Visual inspection of warrantied components: identify leaks at seals, gaskets, and housing; verify engine performance (i.e. skips, misses, knocking, etc.)
- Road test /performance evaluation to identify performance & operational issues

- Repair identified deficiencies to maintain ROs of related underwriting repairs
- Wrap coverage begins at expiration of prior OEM coverage (by age or mileage)

The Aggregate Limits of Liability for all covered claims per covered vehicle during the agreement period is the lesser of \$30,000 on Class 6-8 and \$15,000 on Class 3-5, or the retail value of your vehicle at time of latest covered breakdown. The Aggregate Limits of Liability for the rear apparatus (for vehicles equipped with such) is \$15,000 for single axle and \$20,000 for tandem axle. All costs are in US dollars.

CustTruckRentAgRetRC111820