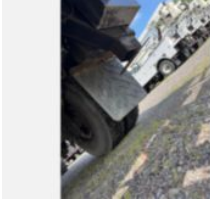
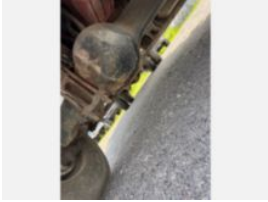
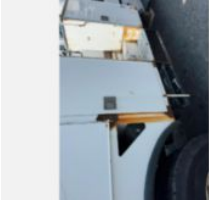
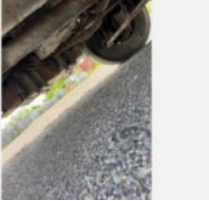


2017 Freightliner M2 Diesel 4x4 Terex Commander 4047

Call for price

Stock    HHHN2482    VIN 1FVDCXDT7HHHN2482



Truck Specifications		Unit Specifications	
Year	2017	Attachment Year	2016
Make	FREIGHTLINER	Attachment Make	Terex
Model	M2106	Attachment Model	Commander 4047
Cab Type	REGULAR CAB	Bed/Body Model	Line Body
Chassis Class	Truck	Maximum Work Height (ft)	52
Engine Make	Cummins		
Engine Model	ISB 6.7L		
Engine HP	250		
Transmission Make	Allison		
Transmission	Auto		
Transmission Speed	6		
FA Capacity	14,000		
RA Capacity	21,000		
Rear Axle Ratio	5.56		
Wheelbase	190		
Current Meter Reading	73,788		
Brakes	AIR		
Fuel Tank Capacity (gal)	50		
Rear Suspension	Air Ride		
Engine Size	6.7		
Engine Fuel Type	Diesel		
Axle Config	4x4		
GVWR (lb)	35,000		
Frame	Steel		
PTO Options	YES		
Running Condition	Running		