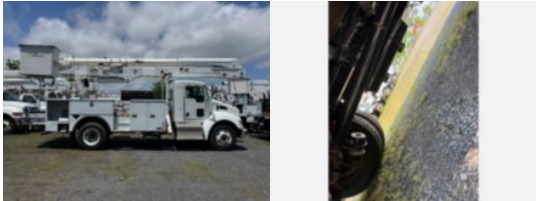
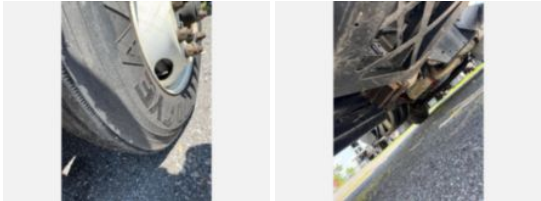


2016 Kenworth T-370 Diesel 4x2 Altec AA-55 Material

\$ 39,000

Stock GM120701 VIN 2NKHHM7X1GM120701



Truck Specifications		Unit Specifications	
Year	2016	Attachment Make	Altec
Make	KENWORTH	Attachment Model	AA55
Model	T370 4x2		
Chassis Class	Truck		
Engine Make	Paccar		
Engine Model	PX7 6.7L		
Engine HP	260		
Transmission Make	Allison		
Transmission	Auto		
Transmission Speed	6		
FA Capacity	13,000		
RA Capacity	20,000		
Rear Axle Ratio	5.57		
Current Meter Reading	72,416		
Fuel Tank Capacity (gal)	50		
Rear Suspension	Air Ride		
Engine Fuel Type	Diesel		
GVWR (lb)	33,000		
Frame	Steel		