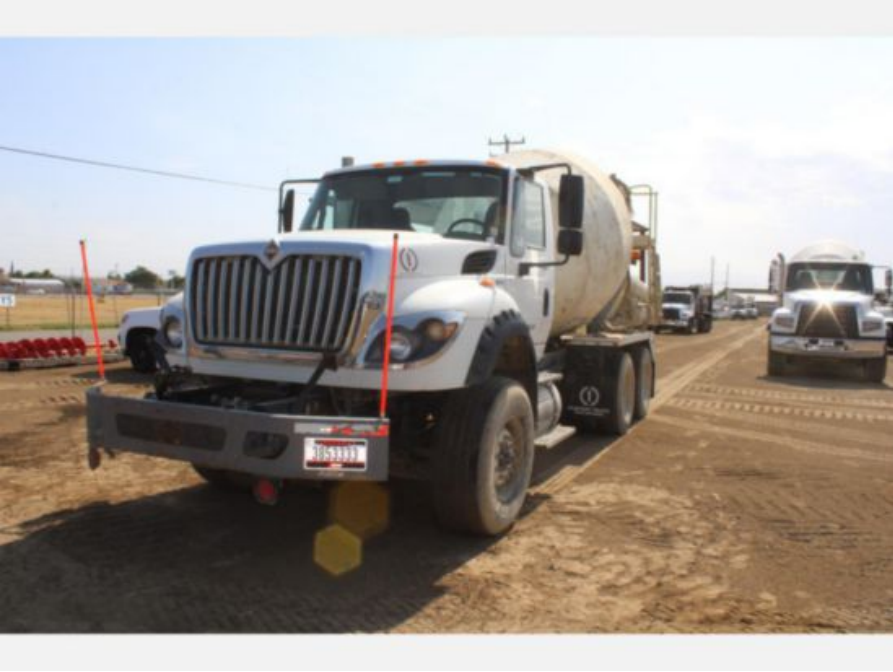


2011 Int'l 7600 6x4 McNeilus Concrete Mixer Truck

Call for price

Stock BJ372070 VIN 1HTGSSJT8BJ372070



Truck Specifications		Unit Specifications	
Year	2011	Bed/Body Make	MCNEILUS
Make	INTERNATIONAL	Bed/Body Model	MIXER
Model	7600		
Cab Type	REGULAR CAB		
Chassis Class	Truck		
Engine Make	International		
Engine Model	MAXXFORCE 13		
Engine HP	475		
Transmission Make	Fuller		
Transmission	Manual		
Transmission Speed	10		
FA Capacity	20,000		
RA Capacity	40,000		
Rear Axle Ratio	4.88		
Wheelbase	269		
Current Meter Reading	38,640		
Brakes	AIR		
Fuel Tank Capacity (gal)	80		
Rear Suspension	Walking Beam		
Engine Size	MAXXFORCE 13 D		
Engine Fuel Type	Diesel		
Axle Config	6x4		
GVWR (lb)	60,000		
Frame	Steel		
PTO Options	YES		
Running Condition	Running		