



Equipment# A0123854

CHASSIS SPECS

UNIT INFORMATION

VIN: 3C7WRNBL7HG625543

Dash: 80,147 Miles

Single Axle

Hydraulic Brakes

Single Frame

Pintle Hitch W/Electric

CAB FEATURES

Standard Daycab

Tow Mirrors

City Horn

INTERIOR FEATURES

Mid Level Interior

A/C Equipped

Manual Windows

Manual Door Locks

High Back Adjustable

Driver Seat

High Back Adjustable

Passenger Seat

Cruise Control

AM/FM

Adjustable Steering Column

GVWR

19,500 LBS.

FRONT AXLE

7,250 LB. FAWR

REAR AXLE(S)

13,500 LB. RAWR

REAR SUSPENSION

Spring

ENGINE

Cummins 6.7L Diesel

325 Horsepower

Dash: 4,497 Hours

Horizontal Exhaust

TRANSMISSION

6-Speed Automatic

TIRES/WHEELS

Front Tire: 225/70R19.5

Front Wheel: Steel

Rear Tire: 225/70R19.5

Rear Wheel: Steel

FUEL TANK(S)

52 Gallon

DEF Tank

EQUIPMENT SPECS

2017 Versalift SST-40-EIH

S/N: EH170067350

350 Lbs. Platform Capacity

40 Ft. Platform Height

27.9 Ft. Side Reach

Upper & Lower Controls

Insulated 46KVAC Category C

Articulated/Telescopic

Hyd. Tool Circuit @ Platform

Dakota Bodies 132-SB

S/N: DB26060

132 Inch Length

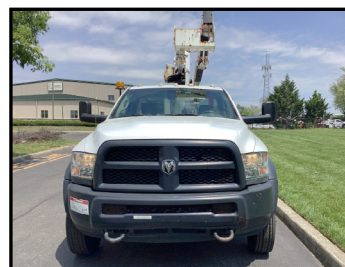
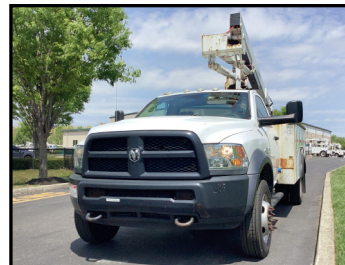
94 Inch Width

24 Inch Tail Shelf

Master Lock System

2017 Dodge Ram 5500 4x4

Versalift SST-40-EIH Bucket Truck



Unit Being Sold AS-IS/WHERE-IS
Qualifies For An Extended Warranty
See Pages 2-3 For More Info.

888-684-8146

www.customtruck.com

ASK ABOUT THE CUSTOMIZED AND FLEXIBLE LEASING & FINANCING
SOLUTIONS AVAILABLE FROM CUSTOM TRUCK CAPITAL
DISCLAIMER: Specifications are believed to be correct, but may contain errors
and/or omissions. Pictures are representative and may not be identical.

Click / Scan For Info



PRICE: \$64,500

STOCK#: HG625543

EX WORKS: Cinnaminson, NJ

QUOTE NUMBER: BN3.1-E_25

Tier B

EXPIRATION DATE: 12/31/2025



Specialty Truck Warranty with Rear Apparatus

Each Warranty Program Includes:

Engine, Critical Components (turbos, fuel injectors, fuel pump, water pump, ECM), Transmission and Rear Differential.
Rear Apparatus coverage includes: Electrical and Hydraulic System.

TRUCKS FROM RENTAL FLEET

24 Months / 50,000 Miles	Class 3-5	Class 6-8
Single-axle boom / bucket trucks, with no swing cab	\$5,075	\$6,000
Tandem-axle boom / bucket trucks and digger derricks	N/A	\$7,000
All units with swing cabs (riding units)	N/A	\$8,000

\$350 deductible per occurrence

Additional coverage options

Aftertreatment

24 Months

\$1,250

Comfort Package

24 Months

\$950

See contract for all details. See back for coverage summary. All costs are in US dollars.



Specialty Truck Warranty with Rear Apparatus

Covered Components Summary

CC = Included in Critical Components
LOL = Limits of Liability

Coverage Exclusions: Please refer to your contract for complete list and details of covered and non-covered items.

Engine (LOL: \$15,000 for Class 3-5; \$22,500 for Class 6-8)

Engine's internally lubricated hard parts include:

- Camshaft and Cam Bearings
- Cam Followers
- Connecting Rods
- Connecting Rod Bearings
- Connecting Rod Caps and Screws
- Crankshaft
- Cylinder Block Casting
- Cylinder Head
- Cylinder Head Gasket
- Cylinder Liners
- Cylinder Head Bolts
- Hydraulic Lifters
- Injector Cups
- Intake and Exhaust Valves
- Intake and Exhaust Valve Guides
- Main Bearings
- Oil Cooler and Housing
- Oil Pan
- Oil Pump Pick Up Screen
- Oil Pump Pick Up Tube*
- Oil Pump Pressure Relief Springs and Valves
- Pistons, Piston Rings, and Piston Oil Cooling Jets
- Power Take Off (PTO)
- Pushrods
- Rocker Arms and Rocker Arm Shafts
- Thrust Washers
- Timing Gears
- Timing Gear Cover and Housing
- Valve Cover
- Valve Retainers and Keepers (Locks)
- Valve Seats
- Valve Springs
- Wrist Pins

"Non-oil" related components:

- Exhaust Manifold
- Flywheel Housing
- Intake Manifold
- Thermostat Housing
- Vibration Dampener

* For Detroit Diesels, breakdowns originating from the "oil pump pick up tube O-ring" will only be covered if the TSB D18M3 has been performed by a certified OEM repair shop.

(CC) Engine Fuel Injectors, Water Pump, Fuel Pump & ECM (LOL \$5,000)

Covered Components:

- Complete Injector
- Fuel Injector Hard Lines
- Fuel Injection Pump
- Fuel Pump
- Engine Control Module (ECM)
- Water Pump

(CC) Turbo (LOL \$7,500)

Turbochargers include:

- Bearings
- Internal Variable Vane Assembly
- Turbine and Turbine Shaft
- Turbo Actuator

Transmission (LOL: \$6,000 for Class 3-5; \$7,500 for Class 6-8)

Internally lubricated hard parts of the manual or automatic transmission include:

- | | |
|-------------|--------------------|
| • Bands | • Oil Pump |
| • Bearings | • Shaft(s) |
| • Blockers | • Shift Forks |
| • Bushings | • Synchronizers |
| • Drums | • Thrust Washers |
| • Gear Sets | • Torque Converter |
| • Governor | • Valve Body |

Differential (LOL: \$6,000 for Class 3-5; \$7,500 for Class 6-8)

Internally lubricated hard parts include:

- Axle Housing
- Axle Shafts
- Bearings
- Bushings
- Carrier Case
- Gear Sets
- Limited Slip Clutch Pack

Power Divider includes:

- Bearings
- Gears
- Shafts
- Shift Forks

Model Year 2014 & Older Aftertreatment (LOL: \$7,000 for Class 3-5; \$8,000 for Class 6-8)

Covered Components:

- Aftertreatment Electronic Control Module (ACM)
- Diesel Exhaust Fluid (DEF) Module with Injection Nozzle
- DEF Tank
- Diesel Oxidation Catalyst (DOC)
- DOC Doser Injector
- Diesel Particulate Filter (DPF)
- DPF Dosing Module
- Exhaust Gas Recirculation (EGR) Valves
- EGR Cooler(s)
- Hydrocarbon Doser Injector (HC Doser, 7th Injector, ARD, AHI Module)
- Selective Catalytic Reduction (SCR) Catalyst
- Sensor, Lambda (O₂ Sensor)
- Sensor, NOx (2)

Model Year 2015 & Newer Aftertreatment (LOL: \$7,000 for Class 3-5; \$8,000 for Class 6-8)

Includes all 2014 Covered Components plus:

- Back Pressure Control Valve (BPV)
- DEF Heater Control Relay
- DEF Dosing Module - Wiring Harness
- DEF Heated Lines (3)
- DEF Heater Coolant Control Valve
- DEF Heating Elements
- DEF Heating Fittings (3 on Supply Module)
- DEF Pump and Module
- DEF Solution Level/Temperature Sensor
- Diesel Particulate Filter (DPF)
- DPF Air, Fuel, and Coolant Lines
- DPF Air, Fuel, Manifold Assembly
- EGR Actuator
- EGR Connecting Bellows and Clamps
- Exhaust Piping, Clamps, and Gaskets
- Exhaust Throttle Valve
- Hydrocarbon Doser Valve - Air, Fuel, and Coolant Lines; and Inline Air Filter
- Hydrocarbon Doser Valve (Voss Valve)
- SCR Decomposition Pipe and Pipe Elbows
- Sensor, BPV Pressure
- Sensor, Delta P (DPF Pressure)
- Sensor, DOC Inlet Pressure
- Sensor, DOC (Post) Temperature
- Sensor, DOC (Pre) Temperature
- Sensor, DPF Air Supply Pressure
- Sensor, DPF Backpressure
- Sensor, DPF Fuel Pressure
- Sensor, Pressure After Exhaust Throttle Valve
- Sensor, SCR (Post) Temperature
- Sensor, SCR (Pre) Temperature
- Wiring Harness - Emission Systems (including overlay)

Comfort Package (LOL \$6,000)

- Charge Air Cooler
- Radiator & Radiator Cap
- Fan Clutch
- Engine Air Compressor
- Alternator
- Starter & Starter Solenoid
- Engine Brake
- Fuel Tanks, Cap, & Valve
- Radio
- HVAC Blower Motor & Resister
- HVAC Temperature Controls, Control Head, & Control Valves
- HVAC Air Compressor & Pulley
- HVAC Fan Hub
- HVAC Heater Core

Apparatus Coverage

(LOL: Single Axle \$15,000;
Tandem Axle/Swing Cabs \$20,000)

Electrical Components

- Electrical Motors
- Electrical Joysticks
- Factory Installed Electronic Controllers
- Engine Air Compressor
- Gauges
- Indicators
- Instruments
- Rotary Electric Motors
- Sensors
- Solenoid Valves
- Switches
- Wiring Harness

Hydraulic System

- Actuators, Controllers & Sensor (Hydraulic Function ONLY)
- Hydraulic Cylinders
- Hydraulic Motors
- Hydraulic Oil Filter Base
- Hydraulic Oil Coolers
- Hydraulic Pump
- Hydraulic Swivel
- Hydraulic Valve
- PTO Pump

Eligibility

- Class 3-8: Start miles up to 900,000 miles (on odometer or ECM), whichever is greater, for Agriculture High Mileage Vehicles and up to 400,000 miles for All Other Vehicles
- Class 3-5 warranty expiration capped at 500,000 total miles
- Class 6-8 warranty expiration capped at 1,000,000 total miles
- Model age must be 20 years from current year or newer

Progressive Damage, Wearout & Carbon Packing

Please refer to your contract for details on Progressive Damage, Wearout and Carbon Packing coverage.

Underwriting

- New engine oil and filter required
- Check fault codes & perform preventative maintenance
- Continuing OEM maintenance recommendations must be followed
- Road test /performance evaluation to identify performance & operational issues
- Wrap coverage begins at expiration of prior OEM coverage (by age or mileage)
- Visual inspection of warranted components: identify leaks at seals, gaskets, and housing; verify engine performance i.e. skips, misses, knocking, etc.
- Repair identified deficiencies to maintain RO's of related underwriting repairs