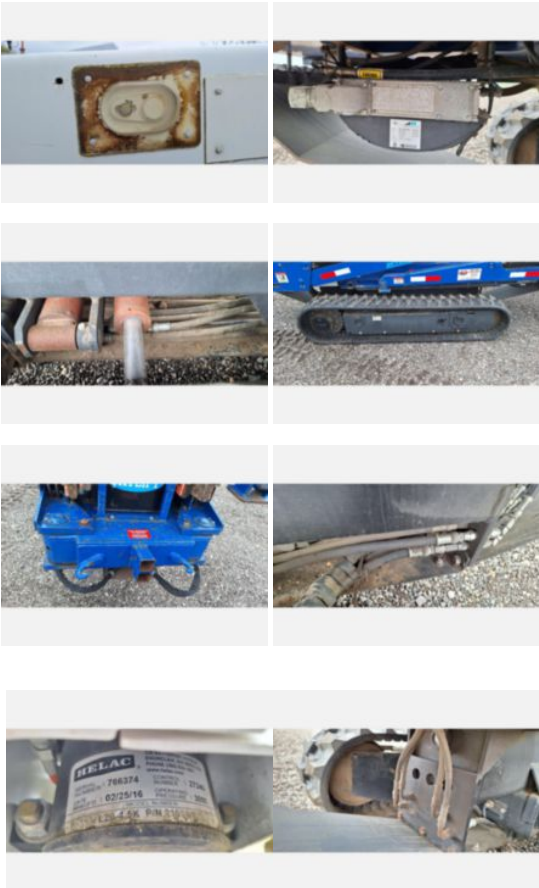
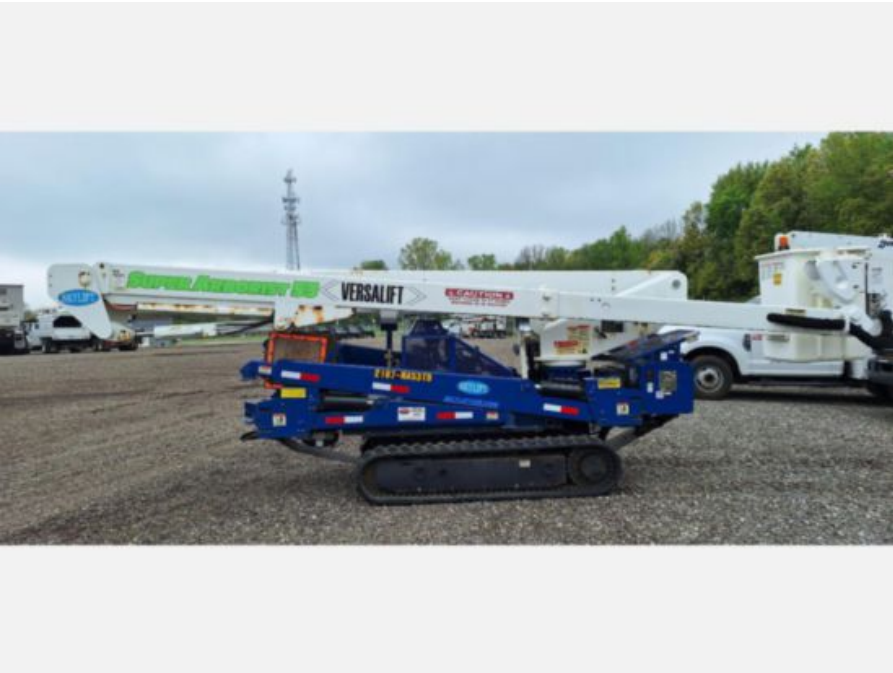


2016 Skylift Versalift VST-52 Mini Tracked Bucket with

Call for price

Stock 7-MA53TD VIN 2197-MA53TD



Track Equipment		Unit Specifications	
Year	2016	Attachment Year	2016
Make	OTHER	Attachment Make	Versalift
Model	SKYLIFT MAS53TD VST52I	Attachment Model	VST-52
Cab Type	NO CAB		
Chassis Class	Equipment		
Engine Make	Kubota		
Engine Model	2.2I		
Engine HP	32		
Engine Hours	7,054		
Engine Size	DIESEL		
Engine Fuel Type	Diesel		
Axle Config	Track		
PTO Options	YES		
Running Condition	Running		