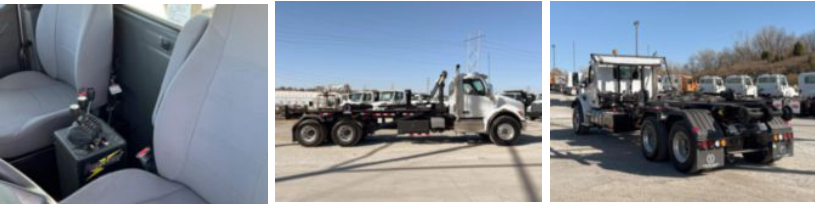


2025 Peterbilt 548 6x4 Galbreath U5-EH-174 Roll-Off Truck

\$ 245,236

Stock SM714597 VIN 2NP8LJ0X8SM714597



Truck Specifications		Unit Specifications	
Year	2025	Attachment Year	2025
Make	Peterbilt	Attachment Make	Galbreath
Model	548	Attachment Model	U5-EH-174
Cab Type	REGULAR CAB		
CA or CT	193		
Chassis Class	CLASS 8 CHASSIS		
Engine Make	PACCAR		
Engine Model	PX9 D		
Engine HP	360		
Transmission	Automatic		
Transmission Speed	6		
FA Capacity	20,000		
RA Capacity	46,000		
Wheelbase	262		
Brakes	AIR DISC		
Rear Suspension	HMXEX460		
Engine Size	PX9 D		
Engine Fuel Type	Diesel		
Axle Config	6x4		
GVWR (lb)	33001+		
Frame	10750350375I		
PTO Options	YES		