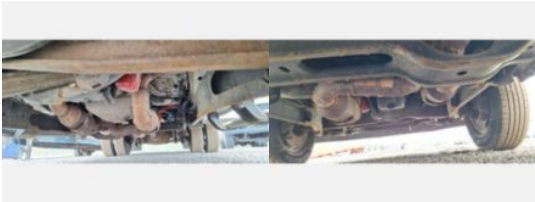
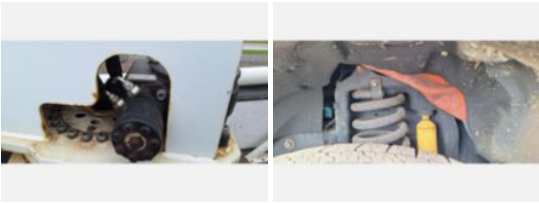
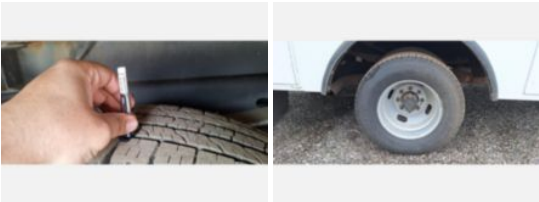
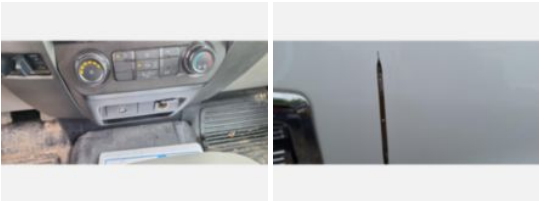


2017 Ford F-350 Gas Powered 4x2 Duralift DTS-29 Telecom

Call for price

Stock    HEF44565    VIN 1FDRF3G6XHEF44565



| Truck Specifications     |             | Unit Specifications      |          |
|--------------------------|-------------|--------------------------|----------|
| Year                     | 2017        | Attachment Year          | 2017     |
| Make                     | FORD        | Attachment Make          | Duralift |
| Model                    | F350        | Attachment Model         | DTS29    |
| Cab Type                 | REGULAR CAB | Maximum Work Height (ft) | 34       |
| Chassis Class            | Truck       |                          |          |
| Engine Make              | Ford        |                          |          |
| Engine Model             | 6.2L        |                          |          |
| Engine HP                | 300         |                          |          |
| Transmission Make        | Ford        |                          |          |
| Transmission             | Auto        |                          |          |
| Transmission Speed       | 5           |                          |          |
| FA Capacity              | 4,000       |                          |          |
| RA Capacity              | 10,000      |                          |          |
| Rear Axle Ratio          | 3.73        |                          |          |
| Current Meter Reading    | 84,042      |                          |          |
| Engine Hours             | 5,704       |                          |          |
| Brakes                   | HYDRAULIC   |                          |          |
| Fuel Tank Capacity (gal) | 31          |                          |          |
| Rear Suspension          | Spring      |                          |          |
| Engine Size              | 6.2         |                          |          |
| Engine Fuel Type         | Gasoline    |                          |          |
| Axle Config              | 4x2         |                          |          |
| GVWR (lb)                | 14,000      |                          |          |
| Frame                    | Steel       |                          |          |
| PTO Options              | YES         |                          |          |
| Running Condition        | Running     |                          |          |