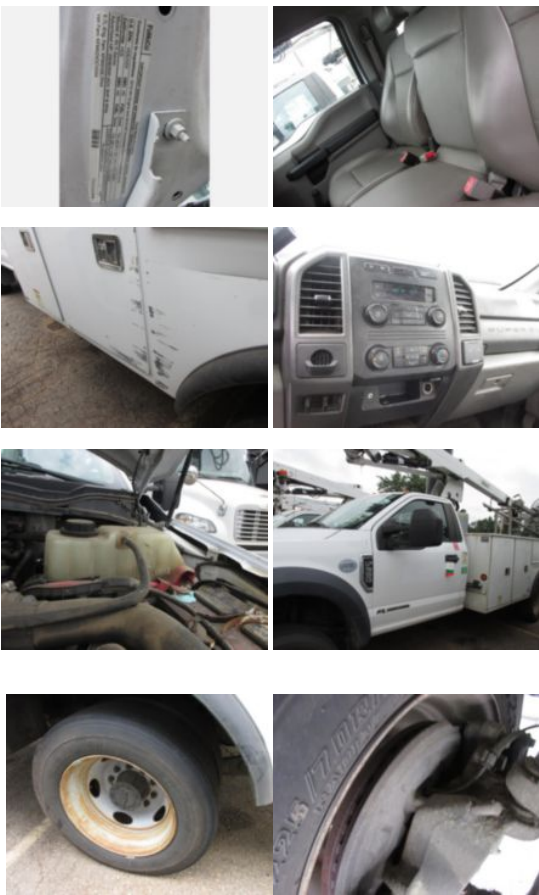


2019 Ford F-550 Powerstroke Diesel 4x2 Versalift STP-36-

Call for price

Stock KDA06714 VIN 1FDUF5GT6KDA06714



| Truck Specifications | | Unit Specifications | |
|--------------------------|-------------|---------------------|-----------------------|
| Year | 2019 | Attachment Year | 2018 |
| Make | FORD | Attachment Make | Versalift |
| Model | F550 | Attachment Model | Telecom Aerial Device |
| Cab Type | REGULAR CAB | | |
| Chassis Class | Truck | | |
| Engine Make | Ford | | |
| Engine Model | 6.7L | | |
| Engine HP | 330 | | |
| Transmission Make | Ford | | |
| Transmission | Auto | | |
| Transmission Speed | 6 | | |
| FA Capacity | 7,000 | | |
| RA Capacity | 14,706 | | |
| Rear Axle Ratio | 4.88 | | |
| Wheelbase | 169 | | |
| Current Meter Reading | 96,033 | | |
| Engine Hours | 3 | | |
| Brakes | HYDRAULIC | | |
| Fuel Tank Capacity (gal) | 40 | | |
| Rear Suspension | Spring | | |
| Engine Size | 6.7 | | |
| Engine Fuel Type | Diesel | | |
| Axle Config | 4x2 | | |
| GVWR (lb) | 19,500 | | |
| Frame | Steel | | |
| PTO Options | YES | | |
| Running Condition | Running | | |