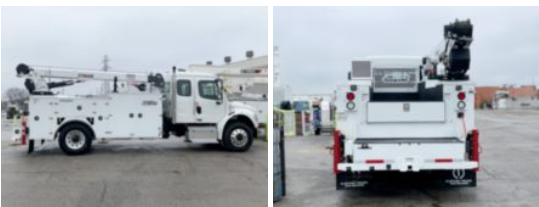


2025 Freightliner M2106 4x2 Load King STINGER 10030

\$ 234,900

StockSDWD9688VIN3ALACXFE0SDWD9688



Truck Specifications		Unit Specifications	
Year	2025	Attachment Year	2025
Make	Freightliner	Attachment Make	Load King
Model	M2106	Attachment Model	STINGER 10030
Cab Type	EXTENDED CAB	Bed/Body Make	Load King
CA or CT	123	Bed/Body Model	LKVOY2MU126SB
Chassis Class	CLASS 7 CHASSIS		
Engine Make	CUMMINS		
Engine Model	L9 D		
Engine HP	330		
Transmission	Automatic		
Transmission Speed	6		
FA Capacity	12,000		
RA Capacity	21,000		
Wheelbase	218		
Brakes	AIR DISC		
Rear Suspension	AIR		
Engine Size	L9 D		
Engine Fuel Type	Diesel		
Axle Config	4x2		
GVWR (lb)	33,000		
Frame	11125356438S		
PTO Options	YES		