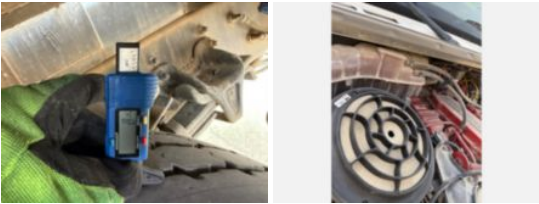


2016 Freightliner M2 Diesel 4x2 Terex Commander 4047

Call for price

Stock GDHC9592 VIN 3ALACXDT5GDHC9592



Truck Specifications		Unit Specifications	
Year	2016	Attachment Year	2015
Make	FREIGHTLINER	Attachment Make	Terex
Model	M2106	Attachment Model	Commander 4047
Cab Type	DAYCAB	Maximum Work Height (ft)	52
Chassis Class	Truck		
Engine Make	Cummins		
Engine Model	ISB 6.7L		
Engine HP	250		
Transmission Make	Allison		
Transmission	Auto		
Transmission Speed	6		
FA Capacity	14,700		
RA Capacity	21,000		
Rear Axle Ratio	6.43		
Wheelbase	189		
Current Meter Reading	86,836		
Brakes	AIR		
Fuel Tank Capacity (gal)	50		
Rear Suspension	Air Ride		
Engine Size	6.7		
Engine Fuel Type	Diesel		
Axle Config	4x2		
GVWR (lb)	33,000		
Frame	Steel		
PTO Options	YES		
Running Condition	Running		