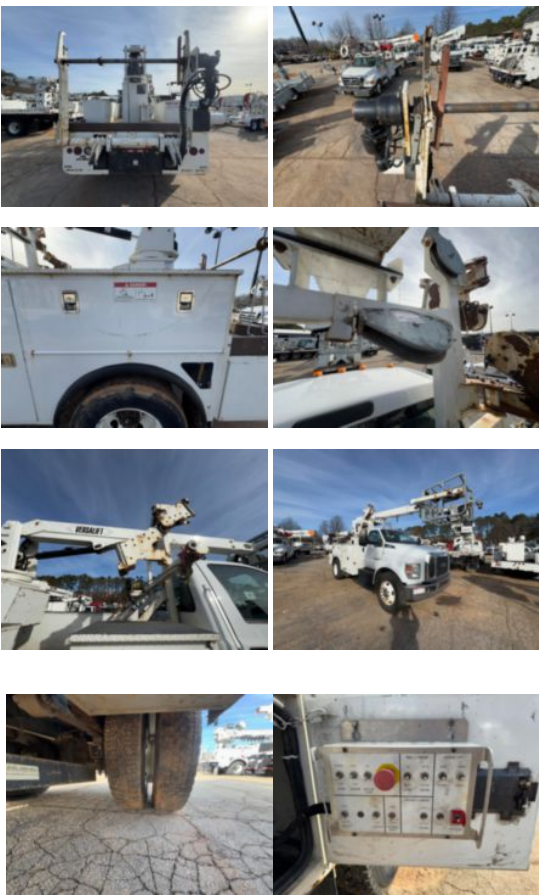


Versalift VTP-40-NE Cable Placer on 2019 Ford F750 4x2

Call for price

Stock KDF00448 VIN 1FDNF7DCXKDF00448



Truck Specifications		Unit Specifications	
Year	2019	Attachment Year	2018
Make	FORD	Attachment Make	Versalift
Model	F750	Attachment Model	VTP-40-NE
Cab Type	REGULAR CAB	Bed/Body Make	DAKOTA BODIES
CA or CT	84	Bed/Body Model	Line Body
Chassis Class	Truck		
Engine Make	Ford		
Engine Model	V8 6.7L		
Engine HP	390		
Transmission Make	Ford		
Transmission	Auto		
Transmission Speed	6		
FA Capacity	12,000		
RA Capacity	21,000		
Rear Axle Ratio	6.5		
Wheelbase	158		
Current Meter Reading	98,474		
Brakes	HYDRAULIC		
Fuel Tank Capacity (gal)	50		
Rear Suspension	Spring		
Engine Size	6.7		
Engine Fuel Type	Diesel		
Axle Config	4x2		
GVWR (lb)	25,999		
Frame	Steel		
PTO Options	YES		
Radio	AM/FM		
Running Condition	Running		