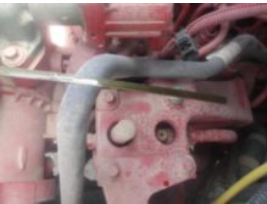
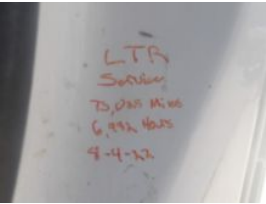


2016 Freightliner M2 Diesel 4x4 Terex TC-55 Material

Call for price

Stock GDGU4039 VIN 3ALDCXDT3GDGU4039



Truck Specifications		Unit Specifications	
Year	2016	Attachment Year	2015
Make	FREIGHTLINER	Attachment Make	Terex
Model	M2106	Attachment Model	TC55
Cab Type	REGULAR CAB	Maximum Work Height (ft)	60
Chassis Class	Truck		
Engine Make	Cummins		
Engine Model	ISB 6.7L		
Engine HP	250		
Transmission Make	Allison		
Transmission	Auto		
Transmission Speed	6		
FA Capacity	14,000		
RA Capacity	21,000		
Rear Axle Ratio	5.57		
Wheelbase	190		
Current Meter Reading	94,815		
Brakes	AIR		
Rear Suspension	Spring		
Engine Size	6.7		
Engine Fuel Type	Diesel		
Axle Config	4x4		
GVWR (lb)	33,000		
Frame	Steel		
PTO Options	YES		
Running Condition	Running		