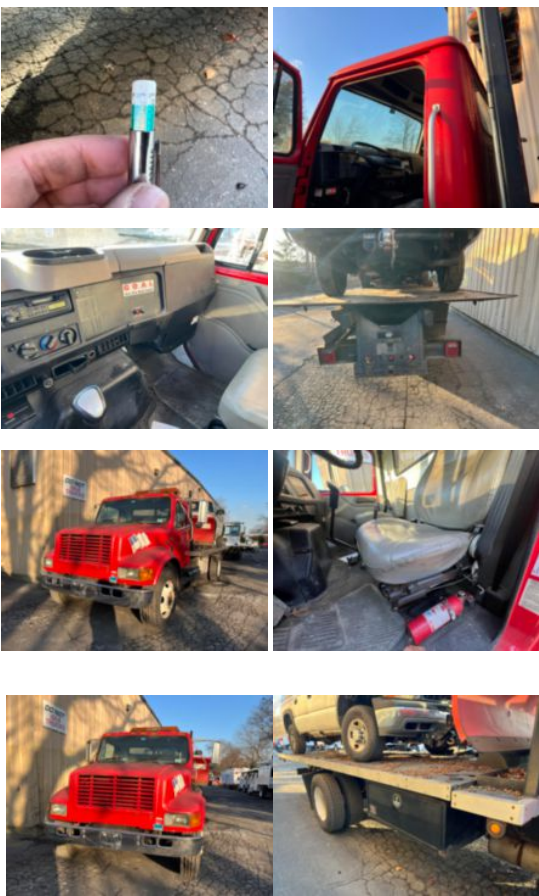


2001 IHC 4700 Diesel 4x4 Roll Back Wrecker Truck

Call for price

Stock 1H404692 VIN 1HTSCAAM61H404692



Unit Specifications		Unit Specifications	
CARB Registered	No	Bed/Body Make	CUSTOM
Year	2001	Bed/Body Model	Flatbed
Make	INTERNATIONAL		
Model	4700		
Cab Type	REGULAR CAB		
Chassis Class	Truck		
Engine Make	International		
Engine Model	dt466 7.6l		
Engine HP	175		
Transmission Make	Fuller		
Transmission	Manual		
Transmission Speed	5		
Rear Axle Ratio	N-175		
Wheelbase	254		
Current Meter Reading	50,076		
Block Heater	YES		
Brakes	HYDRAULIC		
Fuel Tank Capacity (gal)	120		
Rear Suspension	Spring		
Engine Size	7.6		
Engine Fuel Type	Diesel		
Axle Config	4x2		
GVWR (lb)	25,950		
Driver Seat	MID BACK		
Frame	Steel		
Front Tire	295/75R22.5		
Rear Tire	295/75R22.5		
PTO Options	NO		
Passenger Seat	LOW BACK FIXED		
Running Condition	Running		