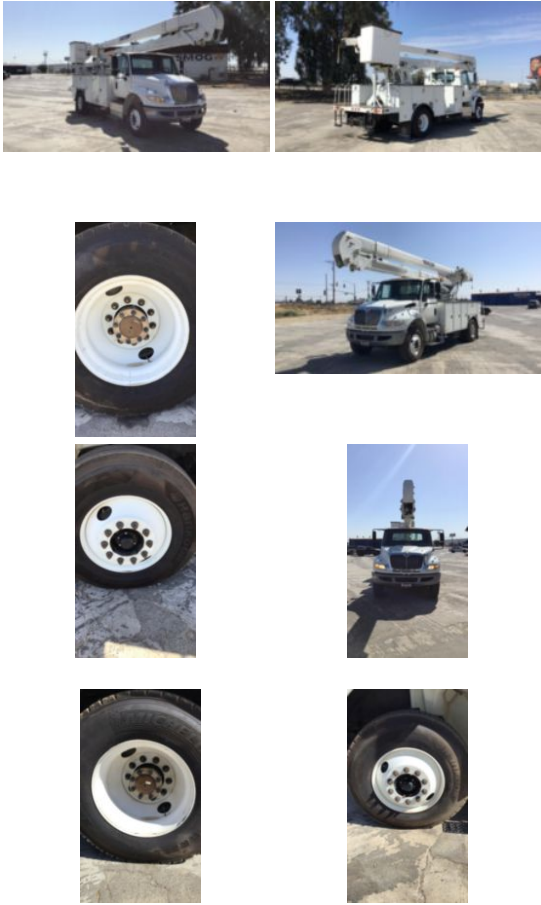


2016 International 4300 4x2 Terex 5TC-55 Bucket Truck

\$ 59,500

Stock GH247552 VIN 1HTMMMNM9GH247552



Truck Specifications		Unit Specifications	
Year	2016	Attachment Year	2015
Make	International	Attachment Make	Terex
Model	4300	Attachment Model	5TC-55
Cab Type	REGULAR CAB	Bed/Body Make	DAKOTA BODIES
Chassis Class	CLASS 7 CHASSIS	Bed/Body Model	Line Body
Engine Make	CUMMINS	Maximum Work Height (ft)	60
Engine Model	ISB D	Boom Insulation	Insulated
Engine HP	250	Boom Length (ft)	55
Transmission	Automatic	Dielectric Rating (kV)	46
Transmission Speed	6	Man Basket	Yes
FA Capacity	13,000	Material Handler	Yes
RA Capacity	20,000	Material Handler (lb)	2,000
Rear Axle Ratio	6.17	Side Reach (ft)	42.5
Current Meter Reading	57,961	Working Height (ft)	60
Engine Hours	6,892		
Block Heater	YES		
Brakes	AIR		
Fuel Tank Capacity (gal)	50		
Rear Suspension	SPRING		
Engine Size	6.7		
Engine Fuel Type	Diesel		
Axle Config	4x2		
Diesel Exhaust Fluid Tank	5		
GVWR (lb)	33,000		
Driver Seat	BENCH - FULL WIDTH		
Frame	SINGLE		
Front Tire	11R22.5		
Rear Tire	11R22.5		
Power Locks	NO		
PTO Options	YES		
Radio	AM/FM/WB		
Power Windows	MANUAL		