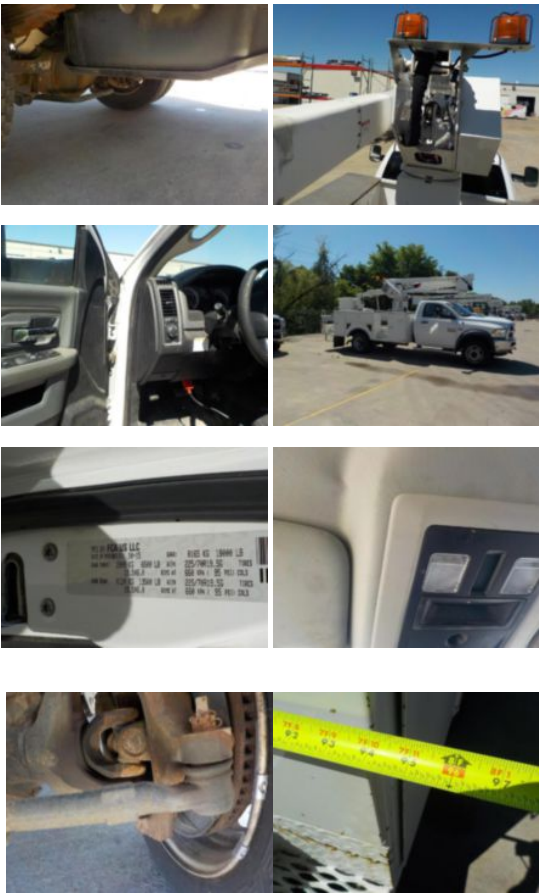


2016 RAM 5500 4x4 Terex LT40 Bucket Truck

Call for price

Stock GG162610 VIN 3C7WRNBJ7GG162610



Truck Specifications		Unit Specifications	
Year	2016	Attachment Year	2016
Make	RAM	Attachment Make	Terex
Model	5500	Attachment Model	LT40
Cab Type	REGULAR CAB	Bed/Body Make	B&G BODIES
CA or CT	84	Bed/Body Model	Line Body
Chassis Class	Truck	Maximum Work Height (ft)	45
Engine Make	Chrysler		
Engine Model	6.4L V8 HEMI		
Engine HP	367		
Transmission Make	Aisin		
Transmission	Auto		
Transmission Speed	6		
FA Capacity	6,500		
RA Capacity	13,500		
Rear Axle Ratio	4.44		
Wheelbase	168		
Current Meter Reading	70,882		
Engine Hours	6,013		
Brakes	HYDRAULIC		
Fuel Tank Capacity (gal)	52		
Rear Suspension	Spring		
Engine Size	6.4		
Engine Fuel Type	Gasoline		
Axle Config	4x4		
GVWR (lb)	18,000		
Frame	Steel		
Front Tire	225/70R19.5		
Rear Tire	225/70R19.5		
PTO Options	YES		
Running Condition	Running		