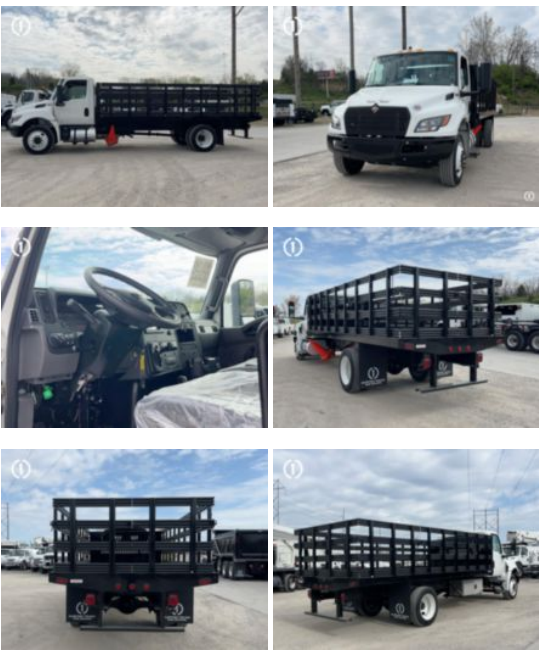


2025 International MV607 4x2 18' 4" Stakebody Truck

\$ 104,800

Stock SL511369 VIN 3HAEUMMM4SL511369



Truck Specifications		Unit Specifications	
Year	2025	Attachment Year	2024
Make	International	Bed/Body Make	Reading
Model	MV607	Bed/Body Model	RTB18X96FB
Cab Type	REGULAR CAB		
CA or CT	144		
Chassis Class	CLASS 6 CHASSIS		
Engine Make	CUMMINS		
Engine Model	6.7L D		
Engine HP	300		
Transmission	Automatic		
Transmission Speed	6		
FA Capacity	10,000		
RA Capacity	21,000		
Wheelbase	211		
Brakes	HYDRAULIC		
Rear Suspension	SPRING		
Engine Size	6.7		
Engine Fuel Type	Diesel		
Axle Config	4x2		
GVWR (lb)	26,000		
Frame	10250361375S		
PTO Options	YES		