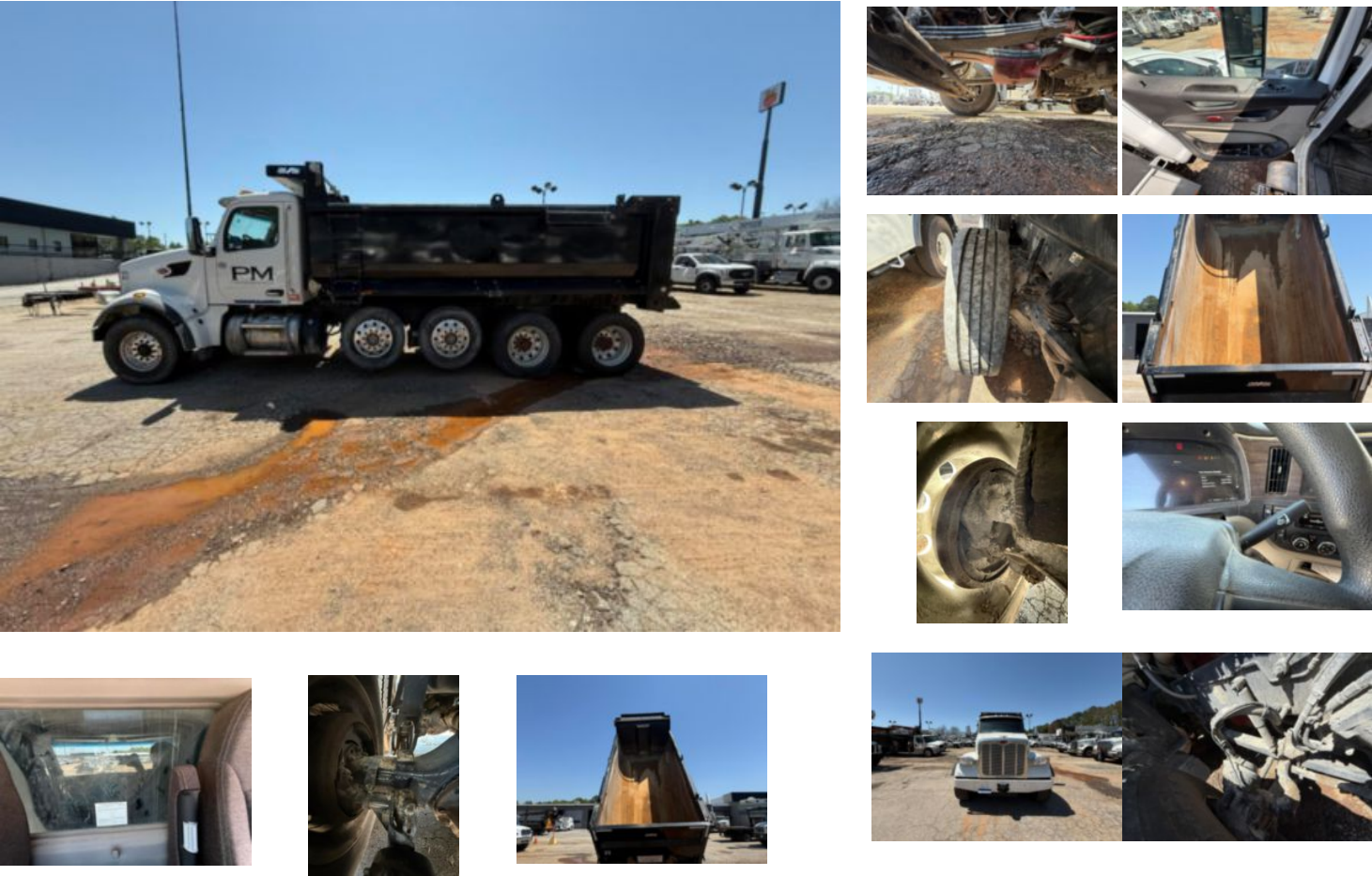


2024 Peterbilt 567 Diesel Quad Axle Dump Truck

\$ 220,000

Stock RD644949 VIN 1NPCX4TX8RD644949



Truck Specifications		Unit Specifications	
Year	2024	Attachment Make	Loadking
Make	PETERBILT	Attachment Model	LKEXD18-0543/16
Model	567		
Chassis Class	Tractor		
Engine Make	Cummins		
Engine Model	X15 14.9L		
Engine HP	525		
Transmission Make	Allison		
Transmission	Auto		
Transmission Speed	6		
FA Capacity	20,000		
RA Capacity	65,000		
Rear Axle Ratio	4.56		
Wheelbase	255		
Current Meter Reading	68,676		
Fuel Tank Capacity (gal)	90		
Rear Suspension	Air Ride		
Engine Fuel Type	Diesel		
GVWR (lb)	85,000		
Frame	Steel		