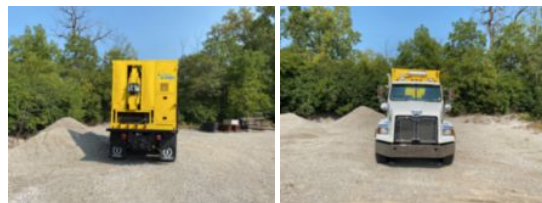


**2018 Western Star 4700 10x4 Condux Tesmec CLP 500**
**\$ 495,000**

Stock JPJP3402 VIN 5KKHAXDV8JPJP3402



Pulling Tensioning		Unit Specifications	
<b>Year</b>	2018	<b>Attachment Year</b>	2019
<b>Make</b>	WESTERN STAR	<b>Attachment Make</b>	Condux
<b>Model</b>	4700	<b>Attachment Model</b>	CLP500
<b>Color</b>	WHITE		
<b>Cab Type</b>	REGULAR CAB		
<b>Chassis Class</b>	CLASS 8 CHASSIS		
<b>Engine Make</b>	DETROIT		
<b>Engine Model</b>	DD13 D		
<b>Engine HP</b>	525		
<b>Transmission</b>	Manual		
<b>FA Capacity</b>	20000		
<b>RA Capacity</b>	46000		
<b>Rear Axle Ratio</b>	4.10		
<b>Wheelbase</b>	260		
<b>Current Meter Reading</b>	110691		
<b>Engine Hours</b>	4022.400000		
<b>Brakes</b>	AIR		
<b>Fuel Tank Capacity</b>	80		
<b>Pusher Axle(s)</b>	(2) 13.2K		
<b>Rear Suspension</b>	AIRLINER		
<b>Engine Size</b>	DD13 D		
<b>Engine Fuel Type</b>	Diesel		
<b>Axle Config</b>	10x4		
<b>GVWR</b>	80000		
<b>Driver Seat</b>	HIGH BACK AIR RIDE		
<b>Frame</b>	DOUBLE		
<b>Front Tire</b>	425/65R22.5		
<b>Rear Tire</b>	11R22.5		
<b>Power Locks</b>	YES		
<b>PTO Options</b>	PROVISION		
<b>Power Windows</b>	YES		
<b>Passenger Seat</b>	HIGH BACK FIXED		