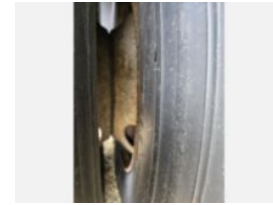
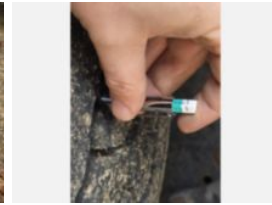
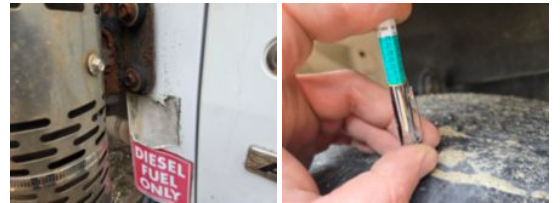


2001 Sterling Diesel 4x2 Arrow Board Traffic Control Truck

Call for price

Stock 1AH13433 VIN 2FZAAJAK71AH13433



Truck Specifications		Unit Specifications	
Year	2001		
Make	STERLING		
Model	M7500		
Chassis Class	Truck		
Engine Make	CAT		
Engine Model	3126		
Engine HP	330		
Transmission Make	Allison		
Transmission	Auto		
Transmission Speed	5		
FA Capacity	9,000		
RA Capacity	19,000		
Rear Axle Ratio	5.29		
Wheelbase	188		
Current Meter Reading	99,778		
Fuel Tank Capacity	30		
Rear Suspension	Air Ride		
Engine Fuel Type	Diesel		
GVWR	28,000		
Frame	Steel		
Running Condition	Not Running		