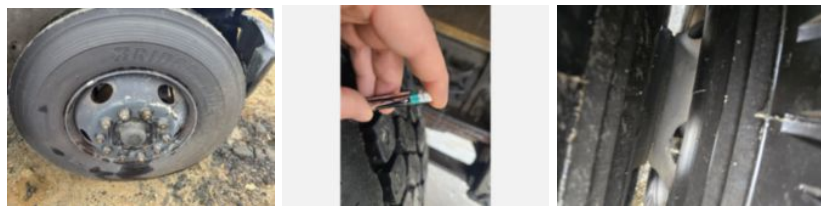
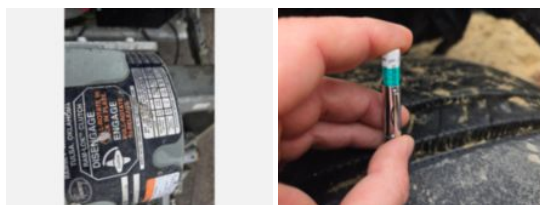


1999 Freightliner FL-60 Diesel 4x2 Traffic Control Truck

Call for price

Stock XH966235 VIN 1FV3GJAC1XH966235



Truck Specifications		Unit Specifications	
Year	1999		
Make	FREIGHTLINER		
Model	FL60		
Chassis Class	Truck		
Engine Make	CAT		
Engine Model	3126		
Engine HP	190		
Transmission Make	Allison		
Transmission	Auto		
Transmission Speed	5		
FA Capacity	9,000		
RA Capacity	17,500		
Rear Axle Ratio	3.9		
Wheelbase	204		
Current Meter Reading	1,047,411		
Fuel Tank Capacity	55		
Rear Suspension	Spring		
Engine Fuel Type	Diesel		
GVWR	26,000		
Frame	Steel		
Running Condition	Running		