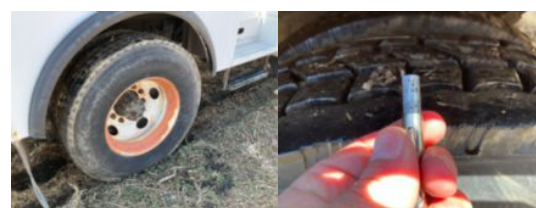
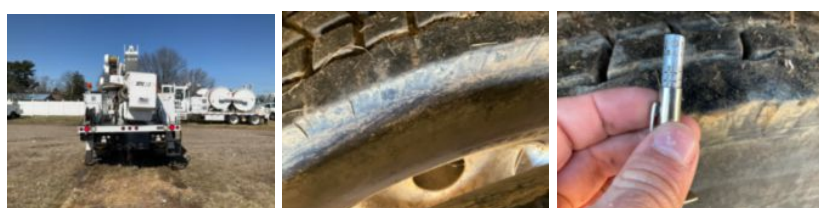
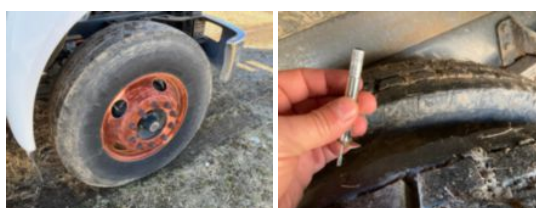
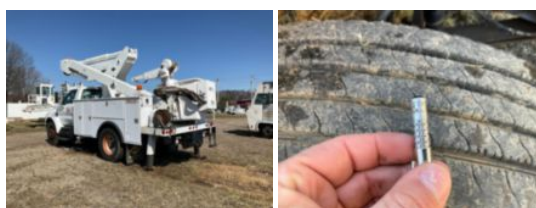
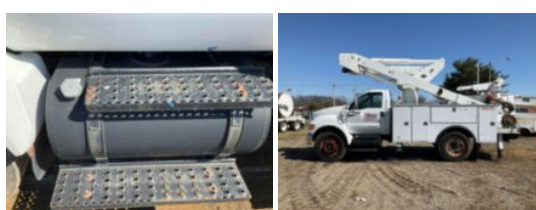


2008 Ford F-750 Diesel 4x2 Versalift VST-5000 Material
\$ 20,350

Stock 8V662141 VIN 3FRXF75H28V662141



Truck Specifications		Unit Specifications	
Year	2008	Attachment Year	2008
Make	FORD	Attachment Make	Versalift
Model	F750	Attachment Model	VST-5000
Chassis Class	Truck		
Engine Make	Cummins		
Engine Model	isb 6.7		
Engine HP	260		
Transmission Make	Allison		
Transmission	Auto		
Transmission Speed	6		
FA Capacity	12,000		
RA Capacity	21,000		
Rear Axle Ratio	5.57		
Wheelbase	157		
Current Meter Reading	4,828		
Brakes	AIR		
Fuel Tank Capacity	52		
Rear Suspension	Spring		
Engine Size	6.7		
Engine Fuel Type	Diesel		
Axle Config	4x2		
GVWR	33,000		
Frame	Steel		
Front Tire	11R22.5		
Rear Tire	11R22.5		
PTO Options	YES		